



**Royal
Osteoporosis
Society**

Better bone health for everybody

Case Studies:

Promoting precision and
clinical reliability in DXA

Jill Griffin DCR (R)

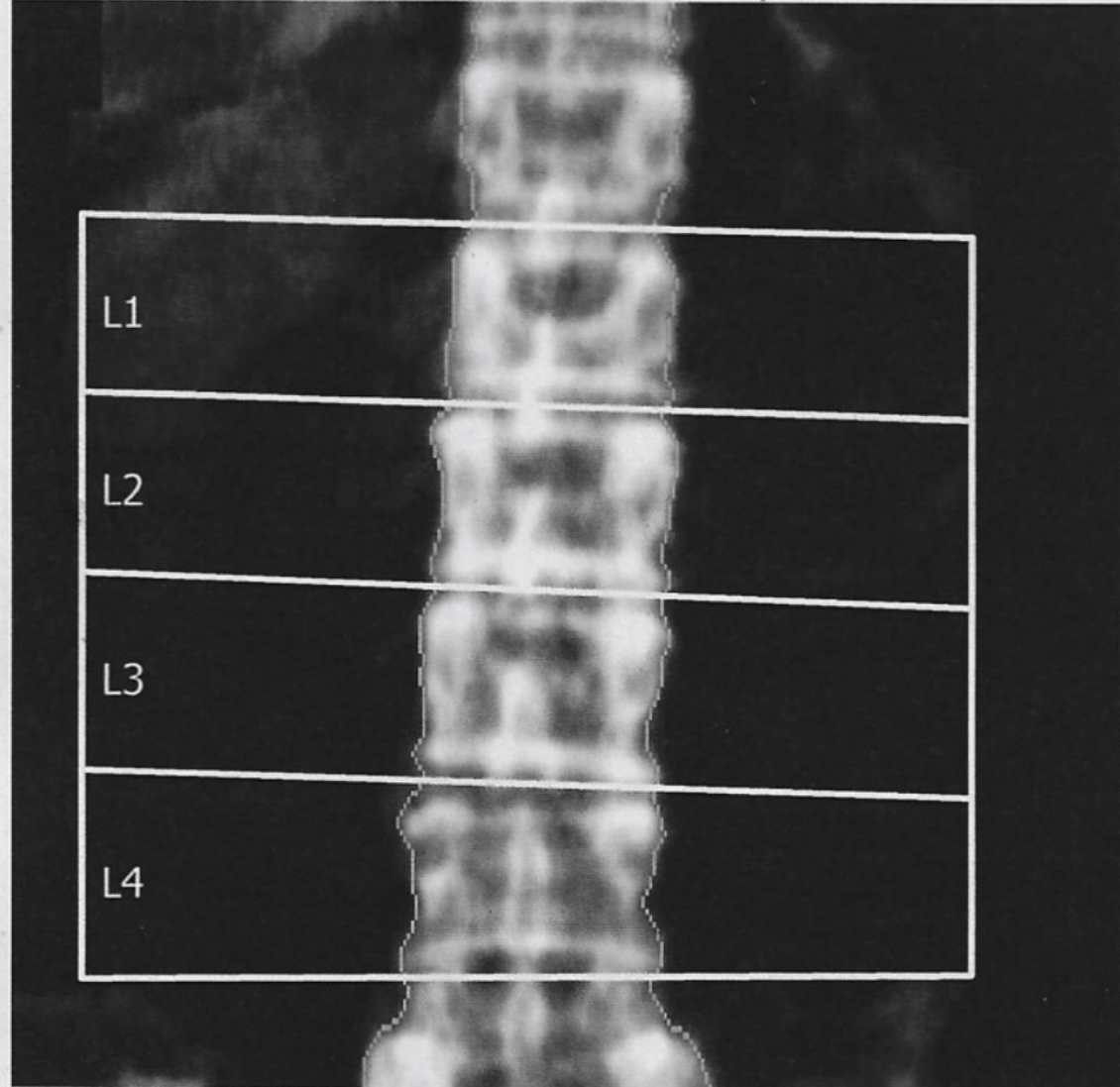
Professional Education Lead

Royal Osteoporosis Society

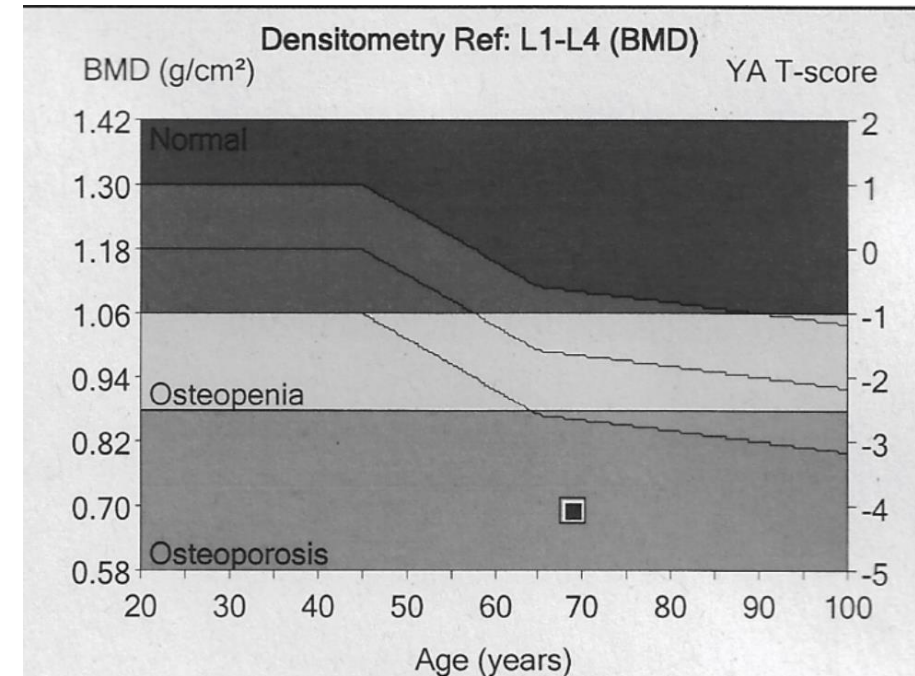
Case Studies

Spine 1

AP Spine Bone Density

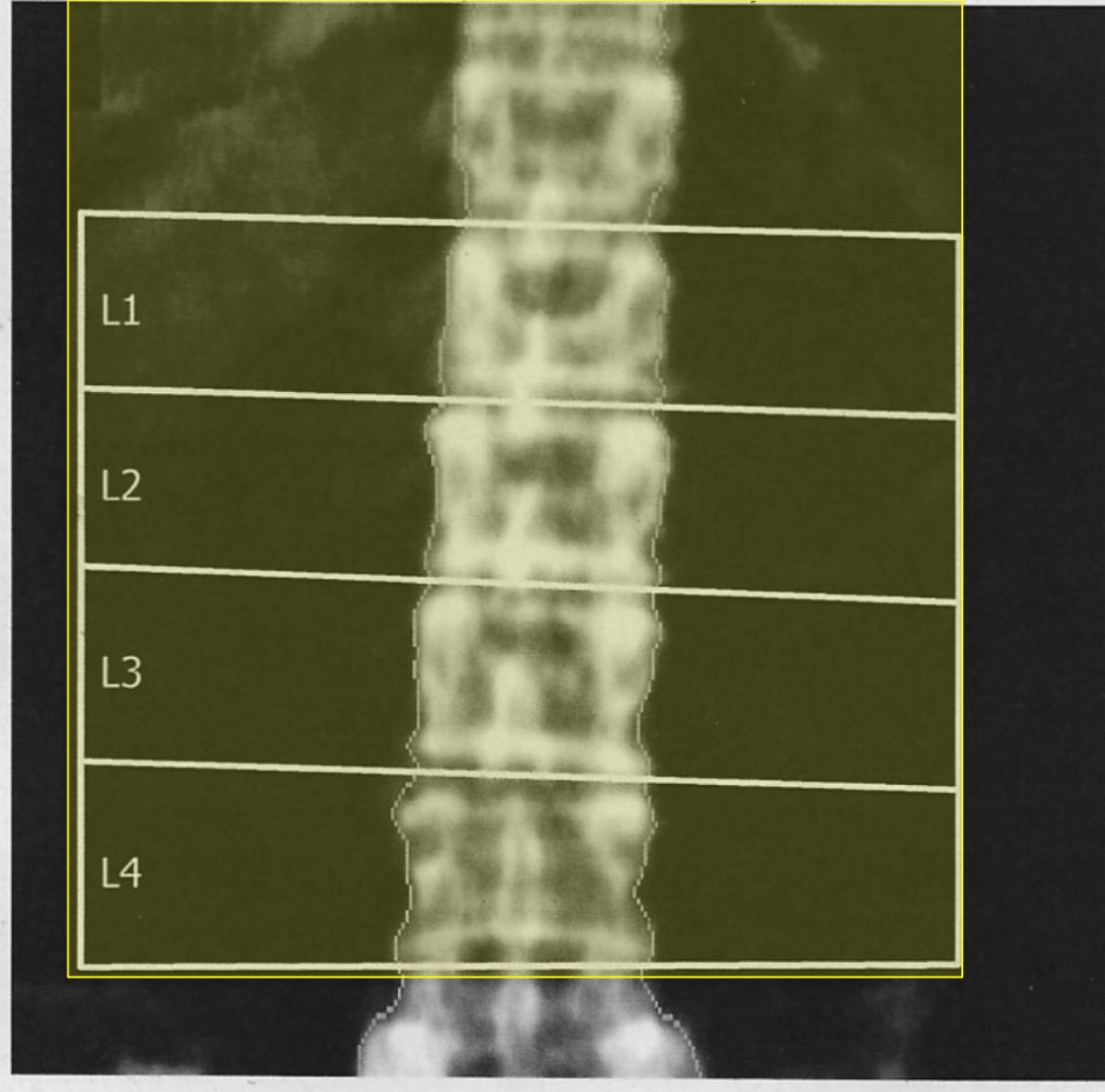


Region	BMD g/cm ²	T-score	Z-score
L1-4	0.689	-4.1	-2.4

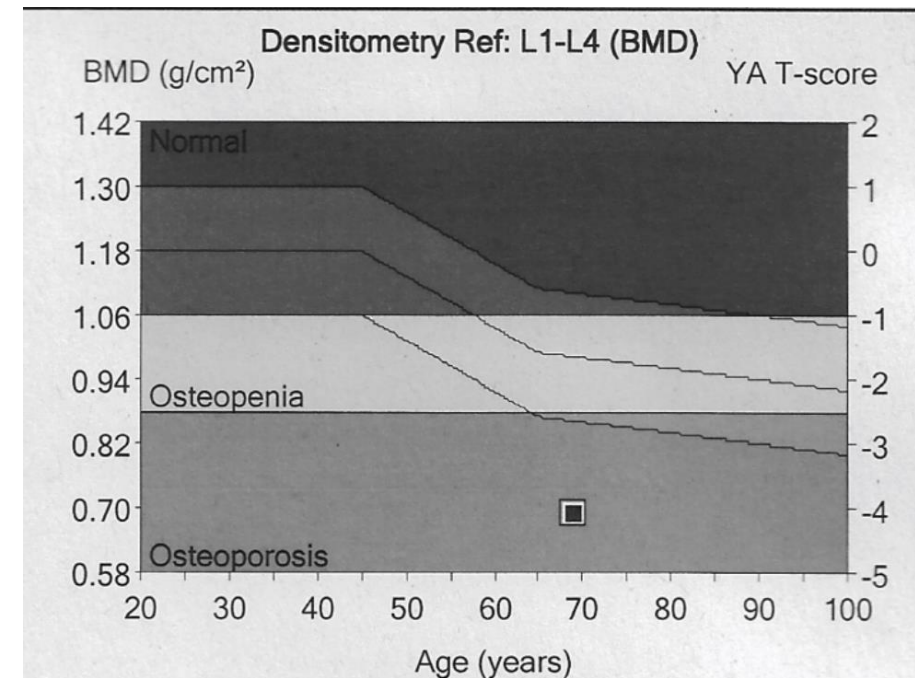


Spine 1

AP Spine Bone Density

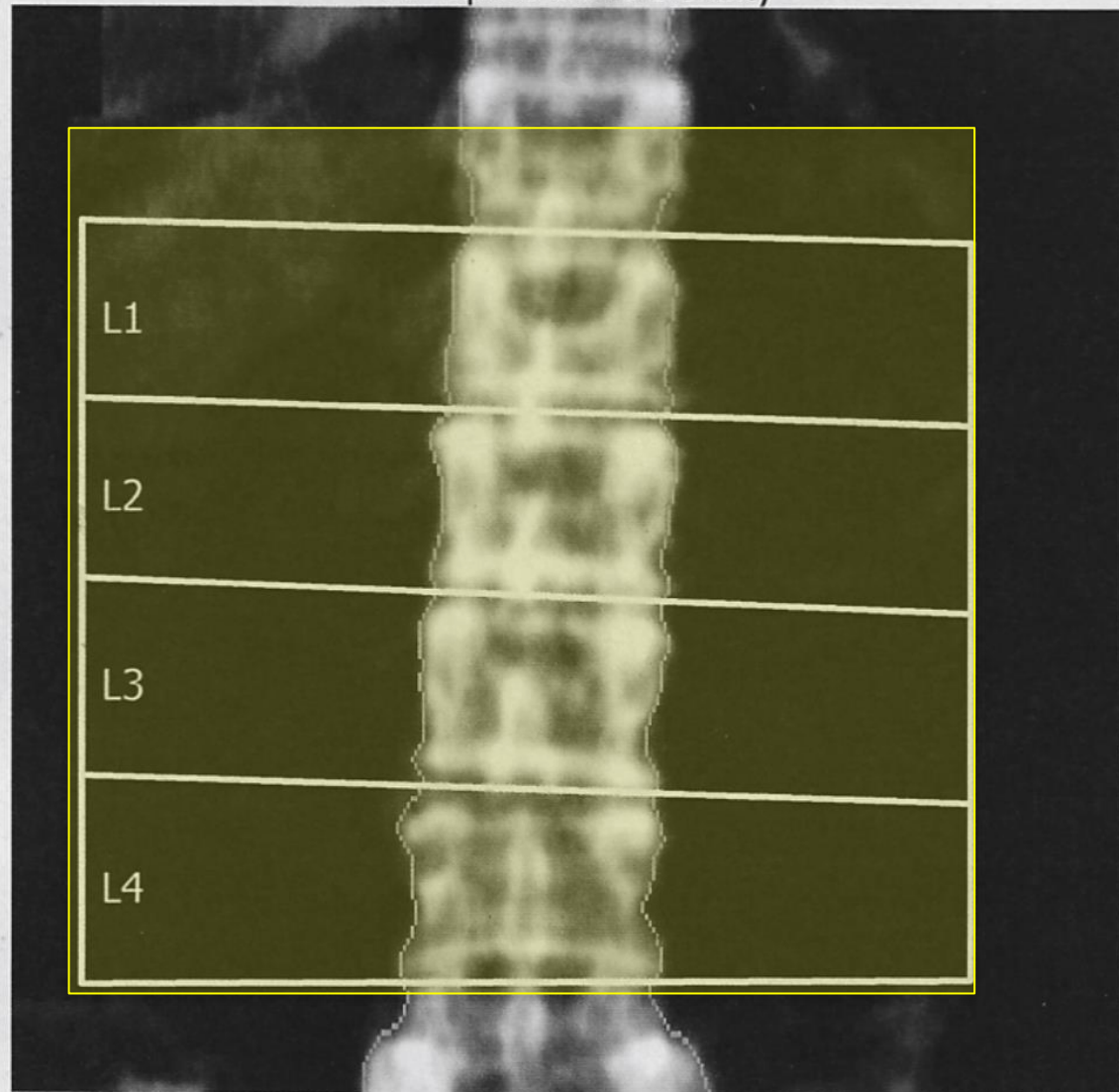


Region	BMD g/cm ²	T-score	Z-score
L1-4 excess ST value	0.689	-4.1	-2.4

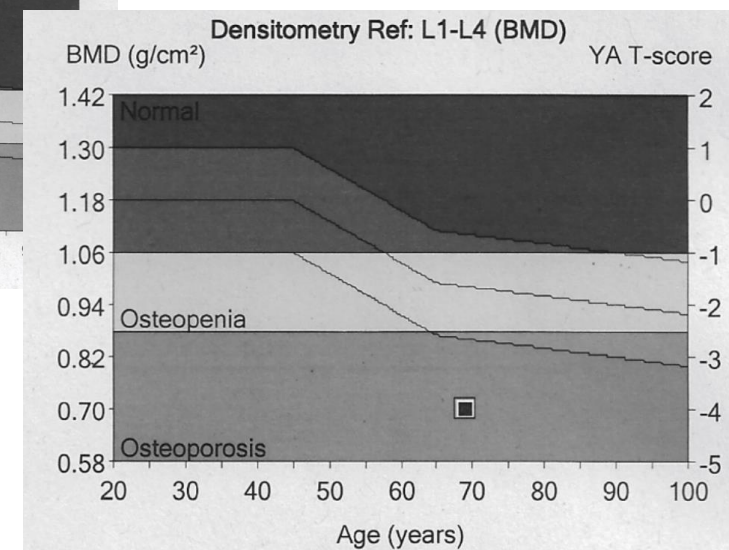
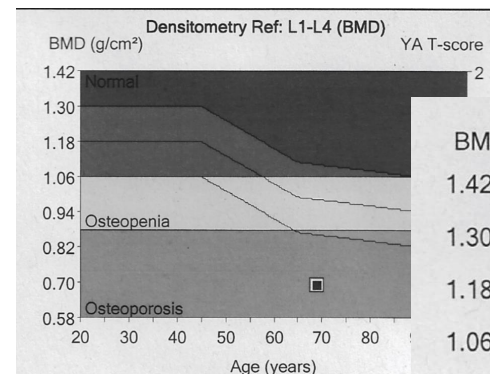


Spine 1

AP Spine Bone Density

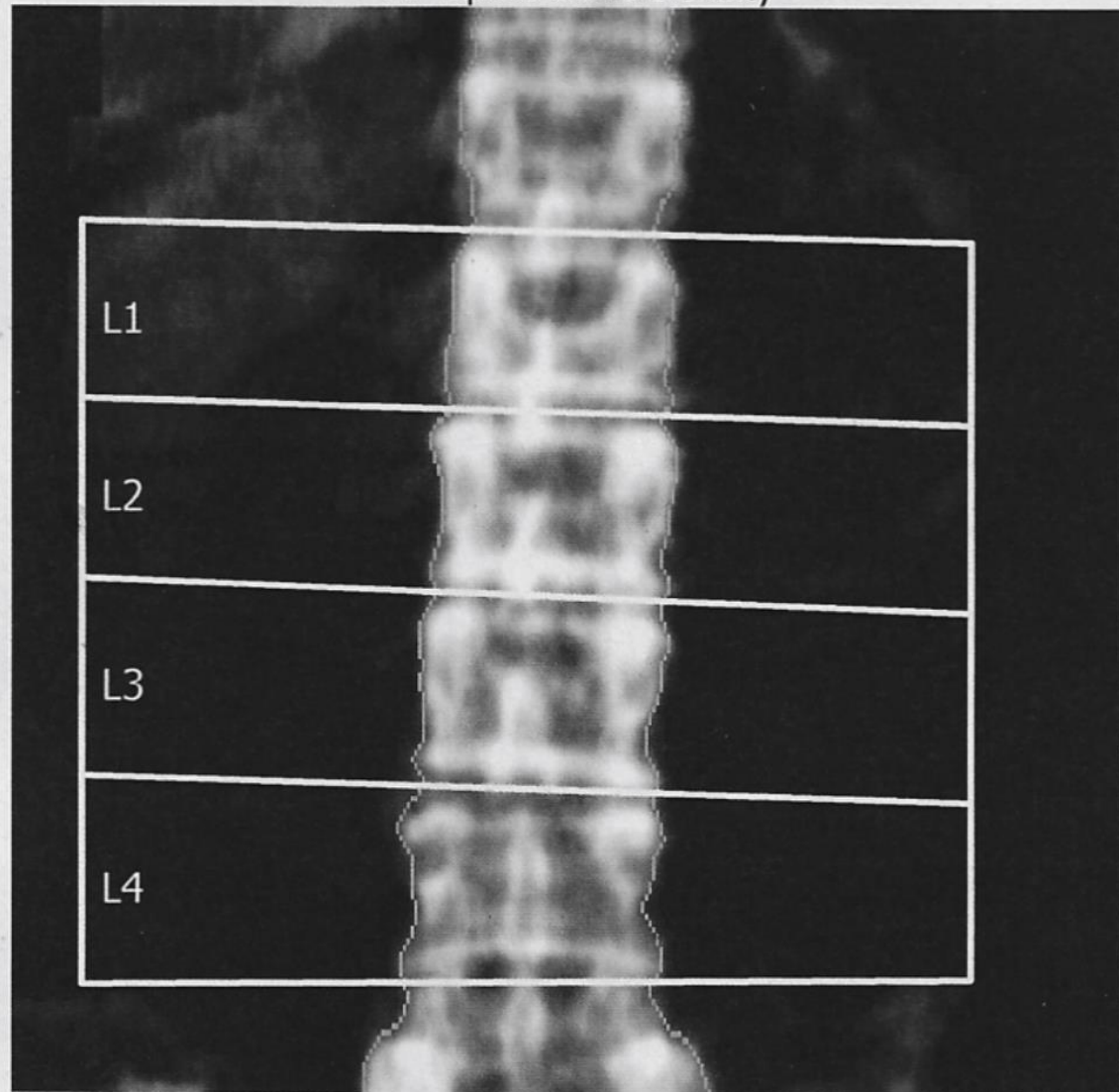


Region	BMD g/cm ²	T-score	Z-score
L1-4 excess ST value	0.689	-4.1	-2.4
L1-4 corrected	0.699	-4.0	-2.4

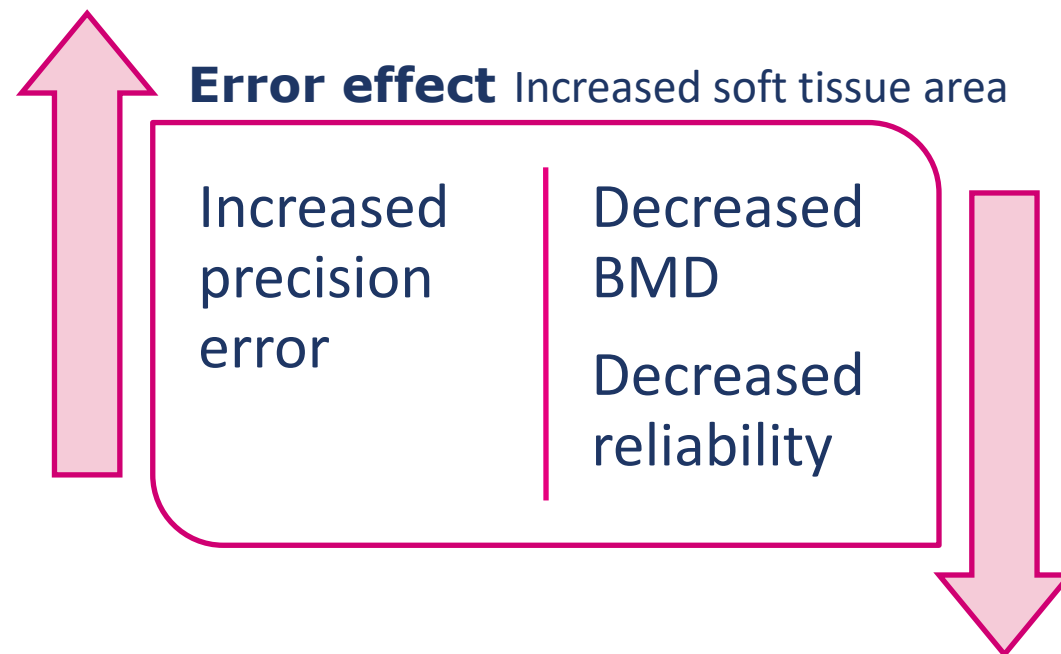


Spine 1

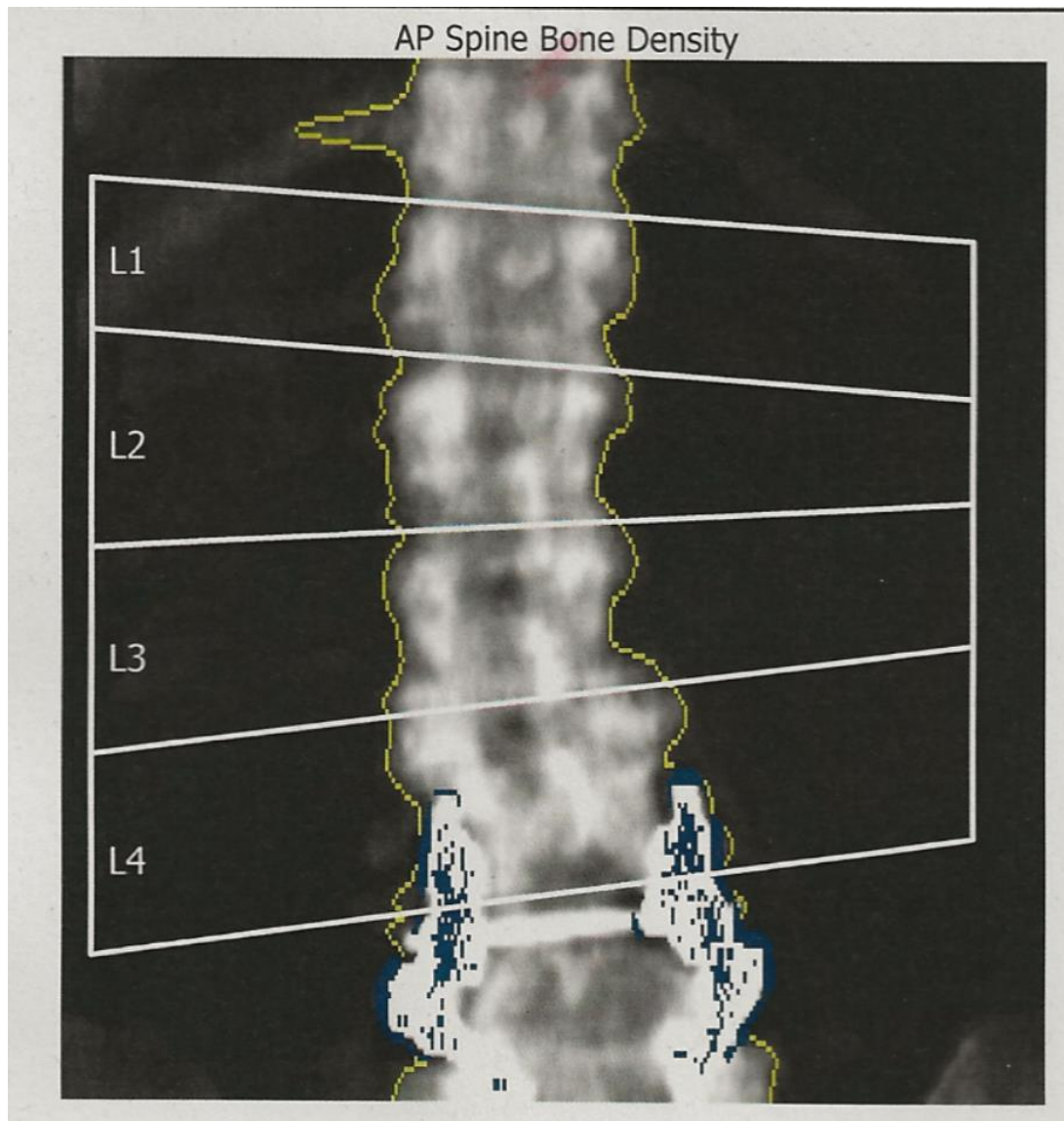
AP Spine Bone Density



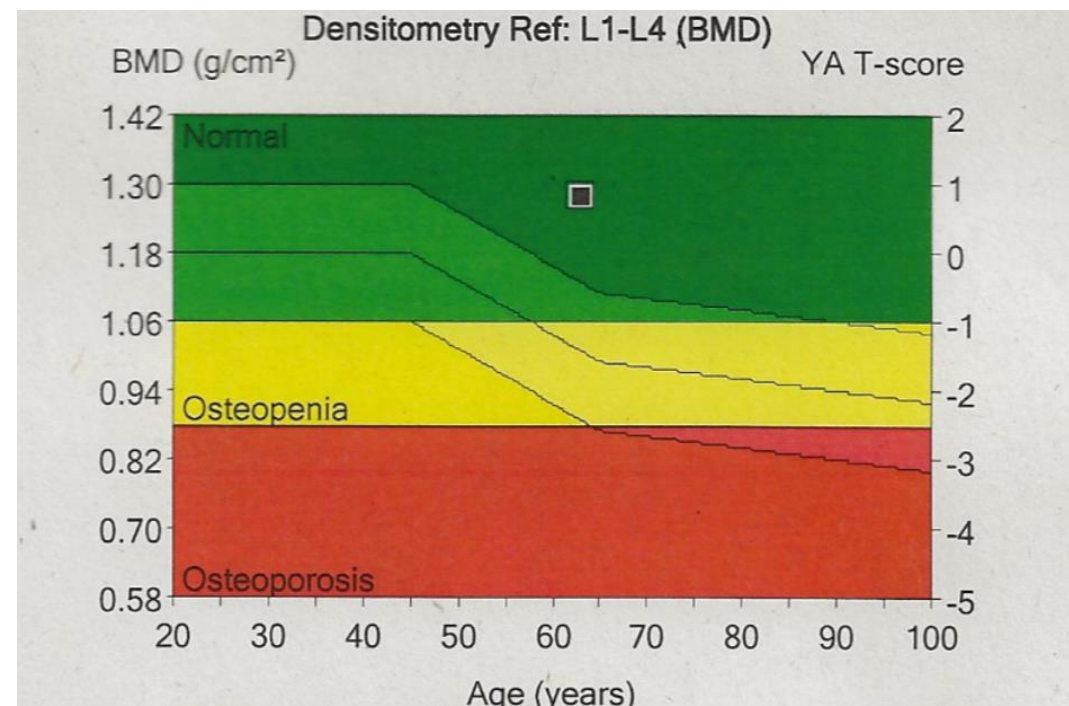
Region	BMD g/cm ²	T-score	Z-score
L1-4 excess ST value	0.689	-4.1	-2.4
L1-4 corrected	0.699	-4.0	-2.4



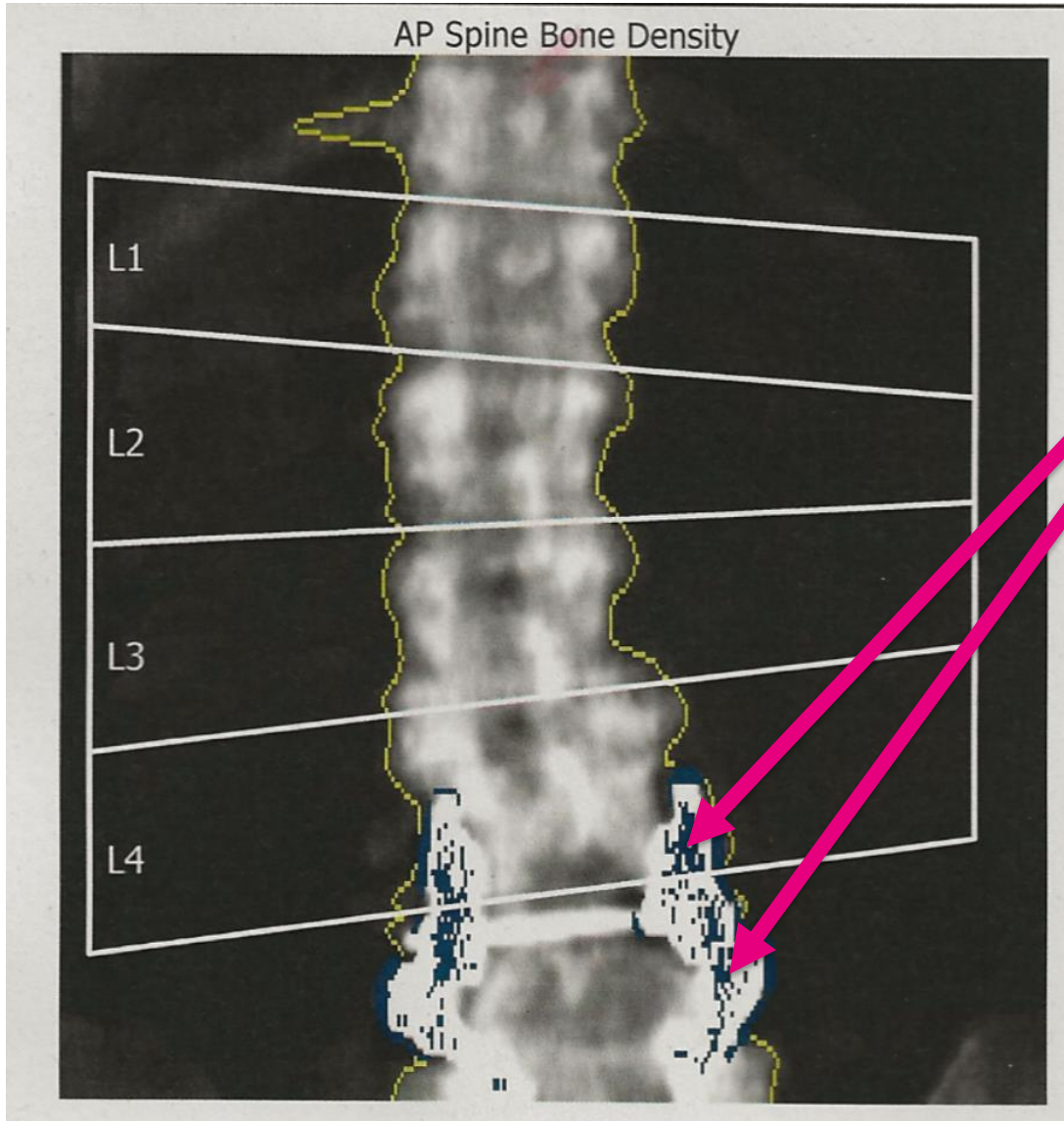
Spine 2



Region	BMD g/cm ²	T-score	Z-score
L1-4	1.277	0.8	2.2

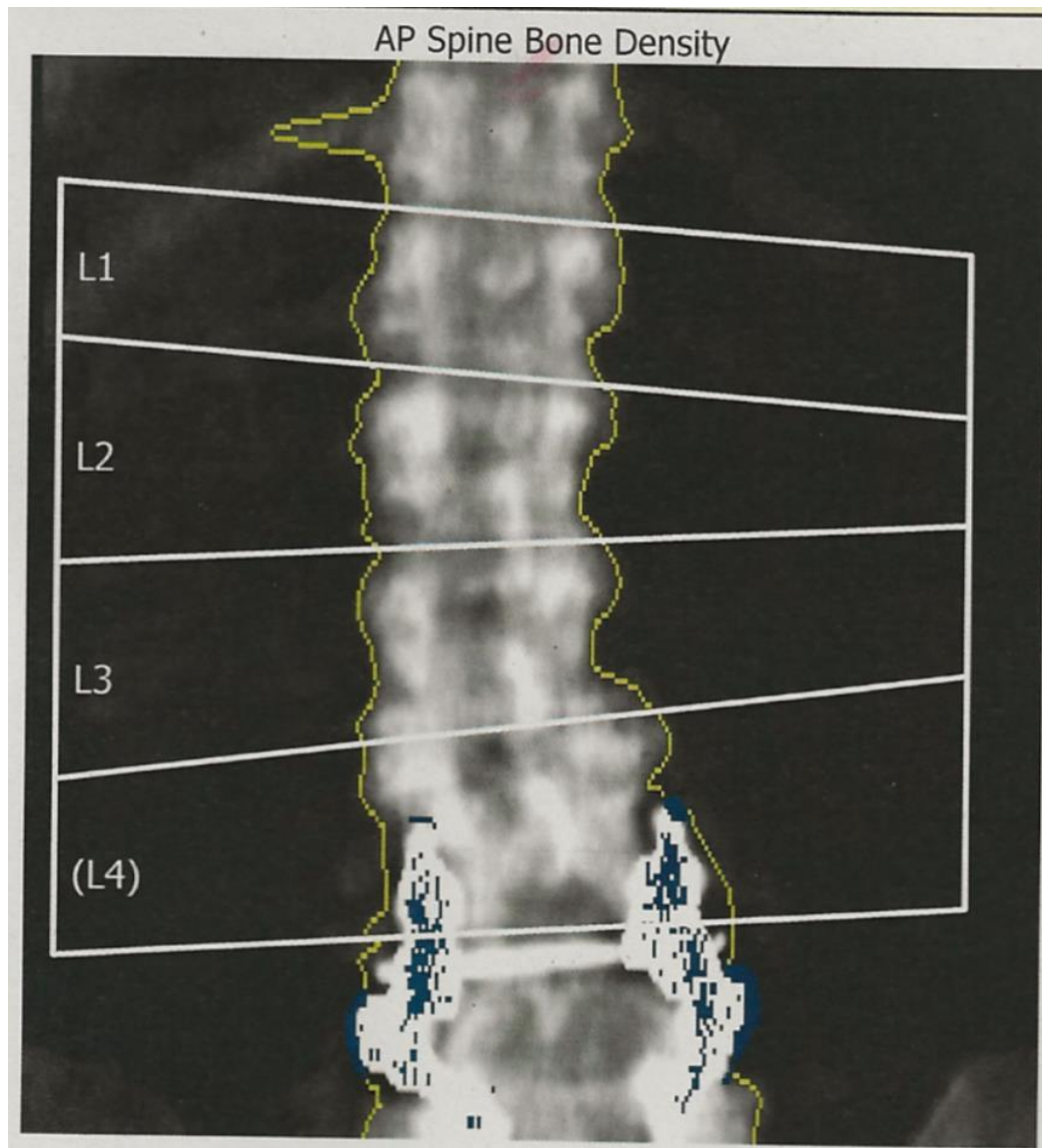


Spine 2

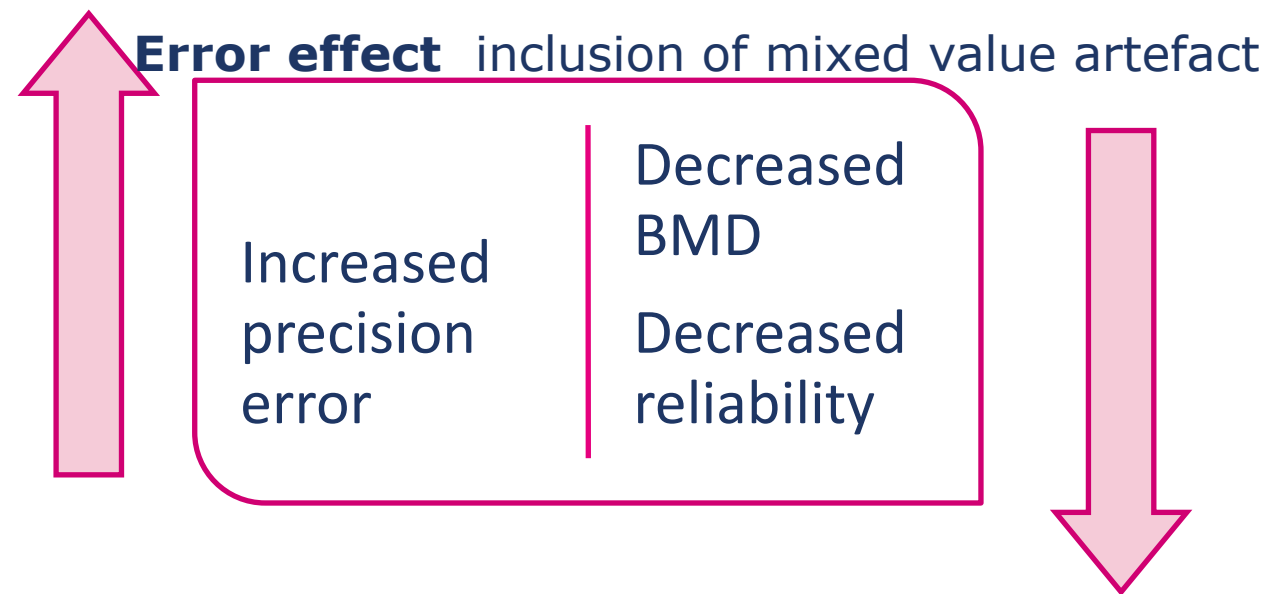


- Auto analysis and scanner software compensation of metallic artefact (mixed interpretation)

Spine 2

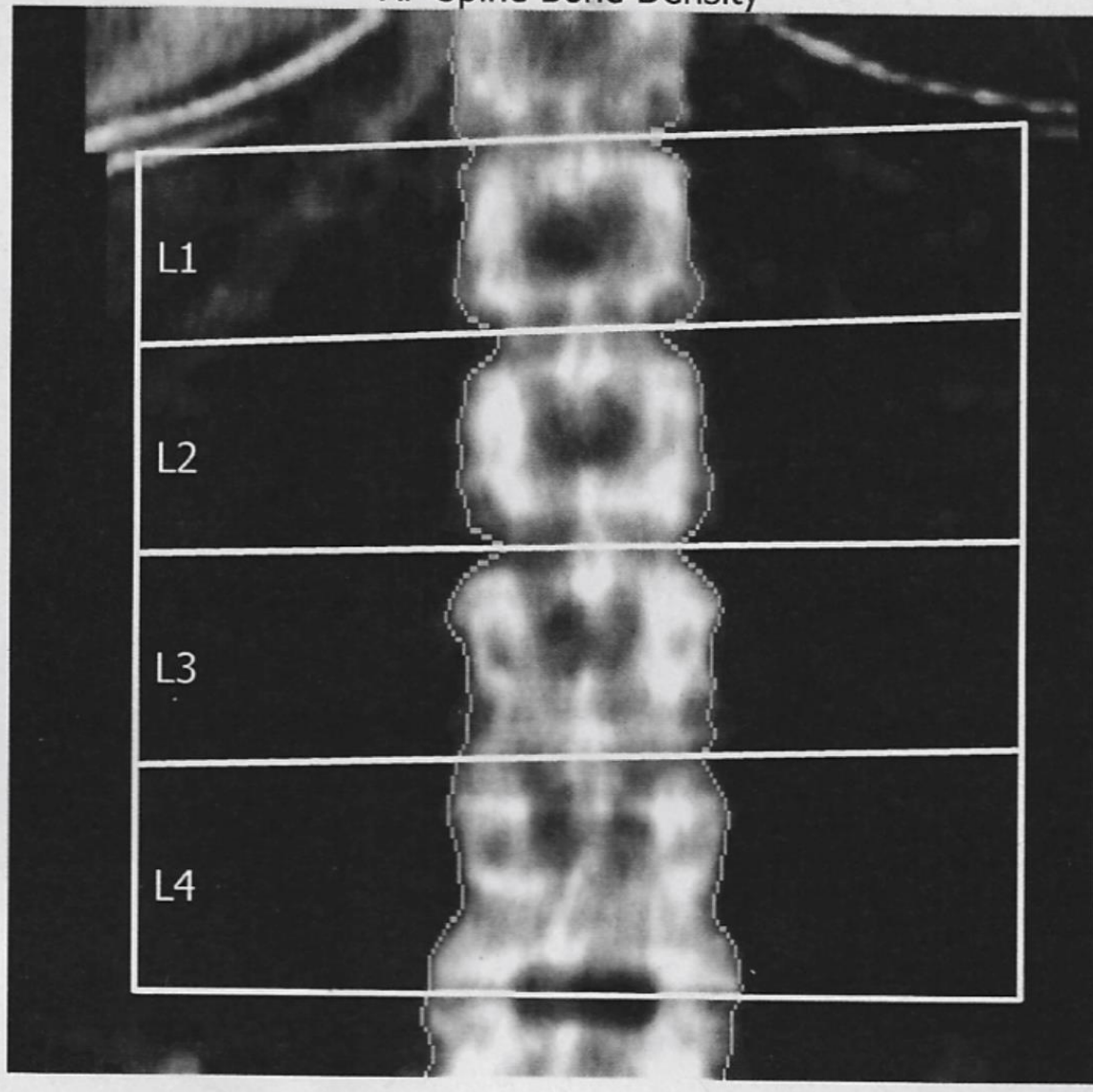


Region	BMD g/cm ²	T-score	Z-score
L1-4	1.277	0.8	2.2
L1-3 corrected	1.394	1.9	3.3

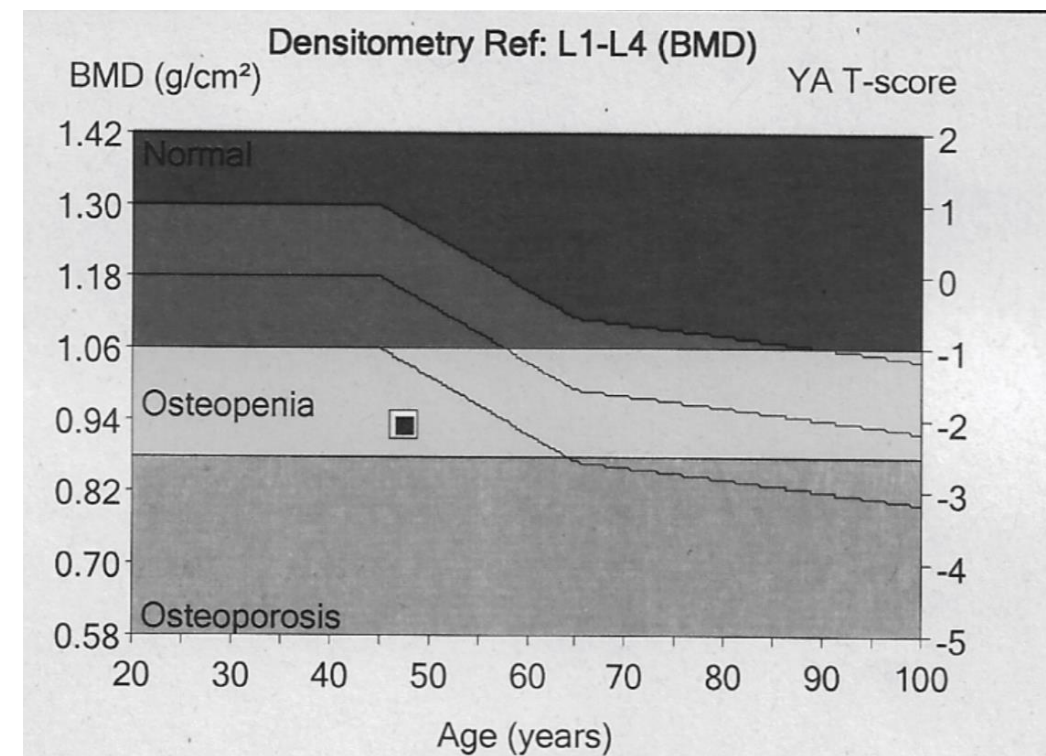


Spine 3

AP Spine Bone Density

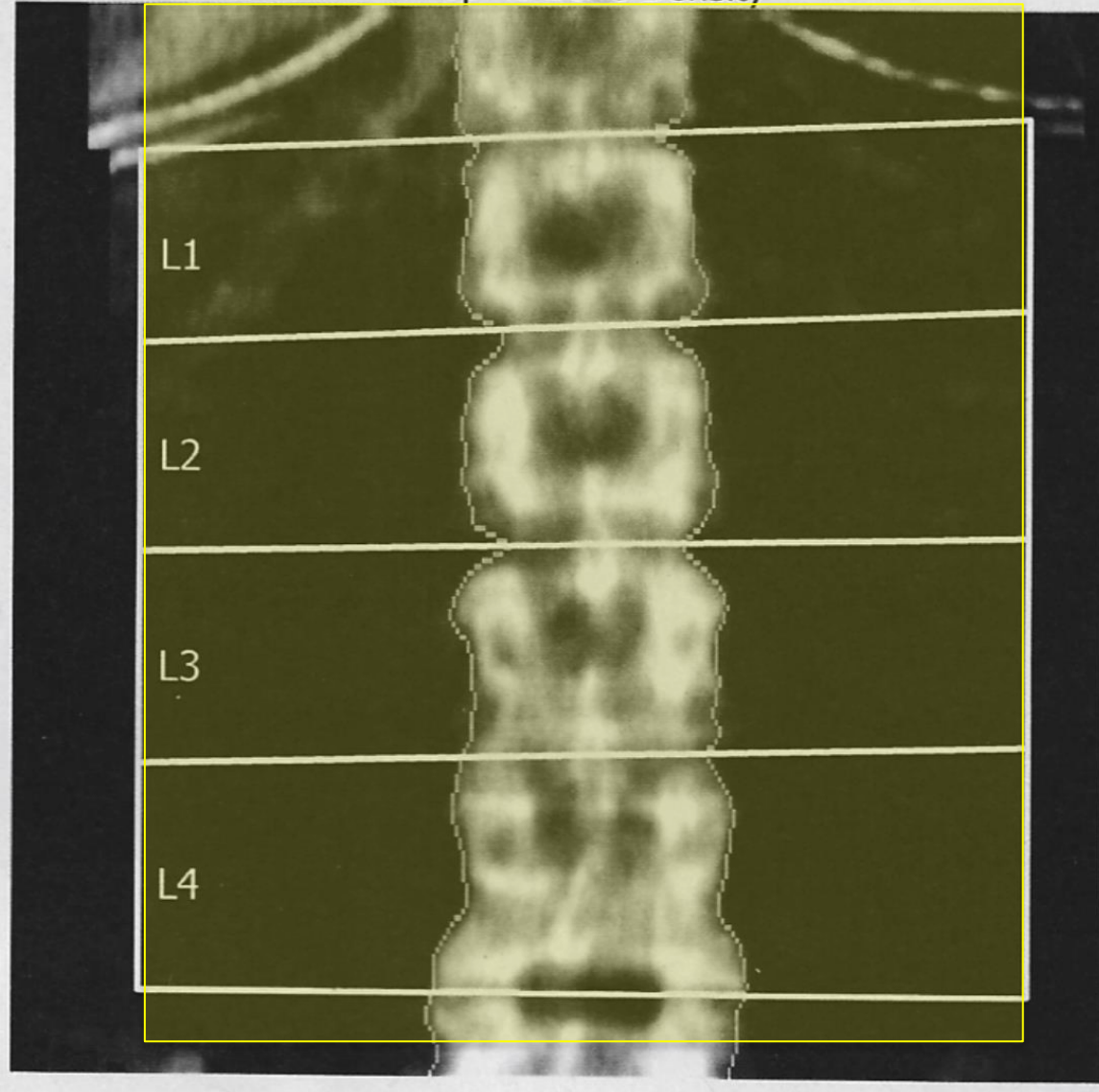


Region	BMD g/cm ²	T-score	Z-score
L1-4	0.932	-2.1	-1.9

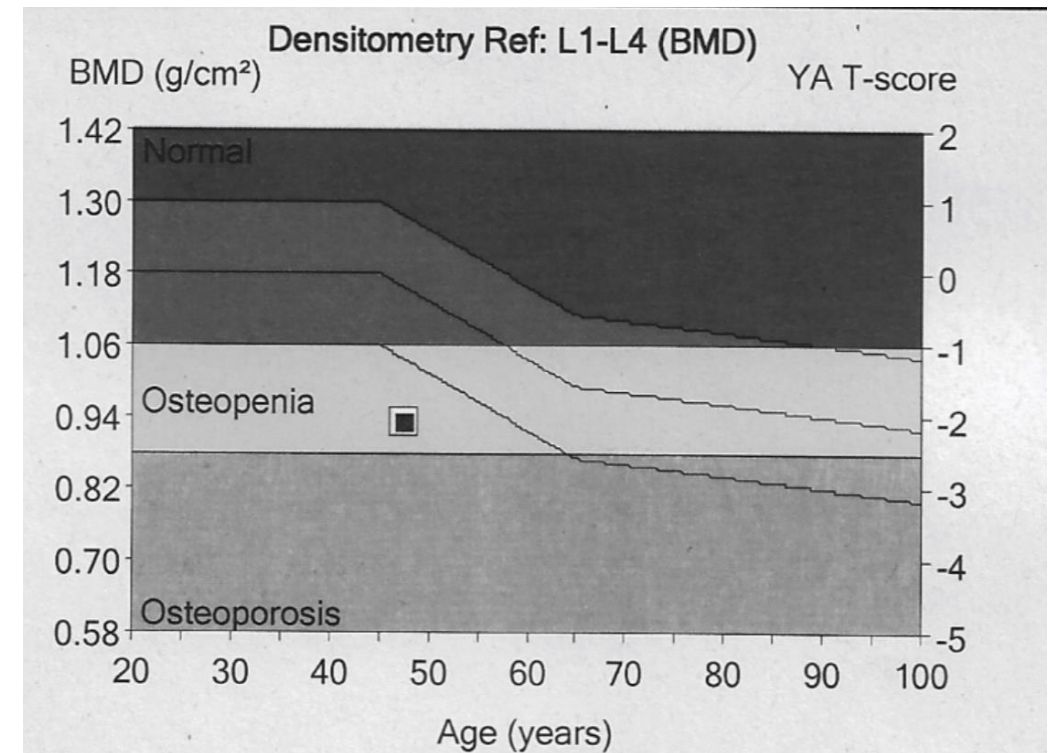


Spine 3

AP Spine Bone Density

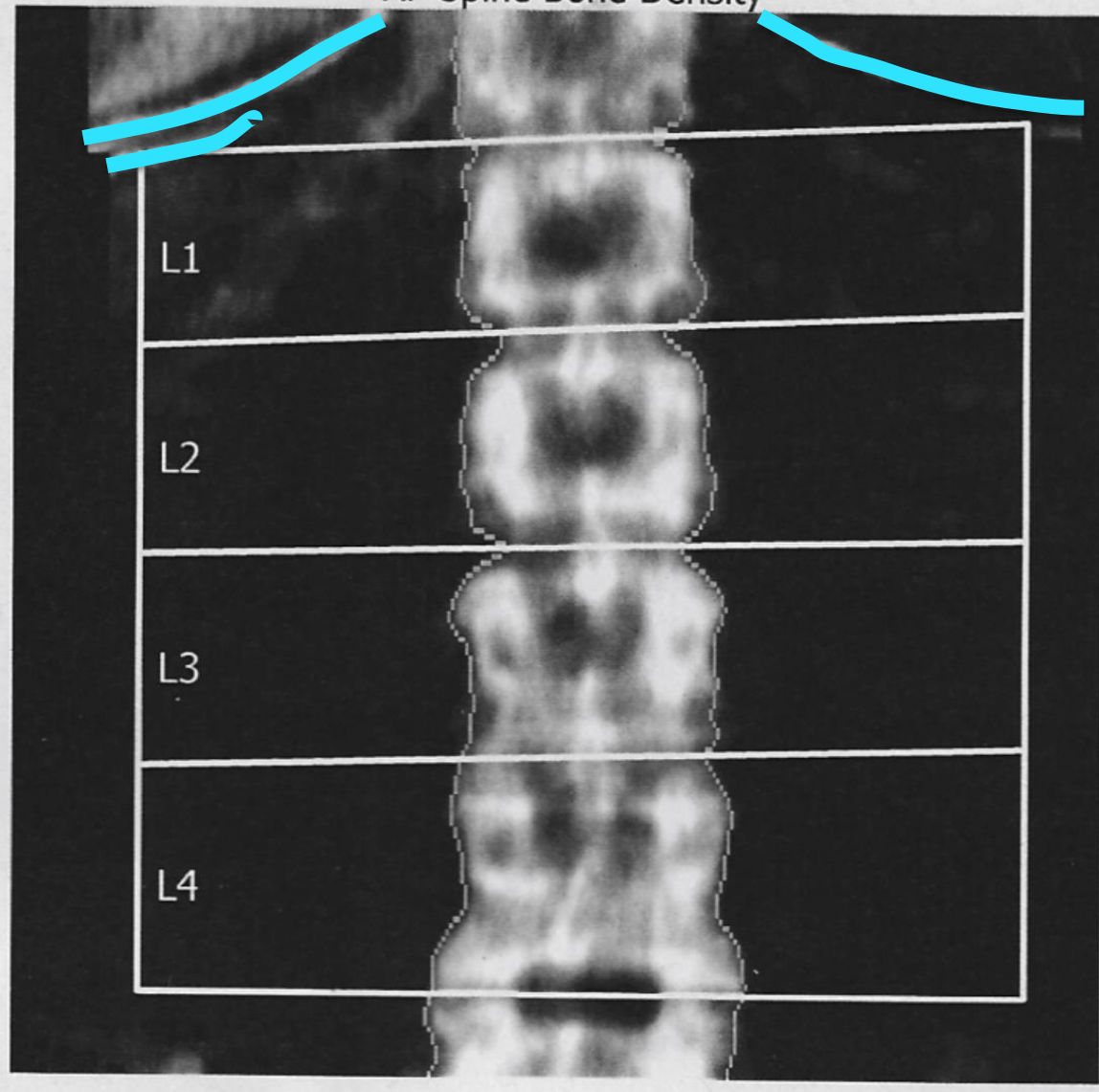


Region	BMD g/cm ²	T-score	Z-score
L1-4	0.932	-2.1	-1.9

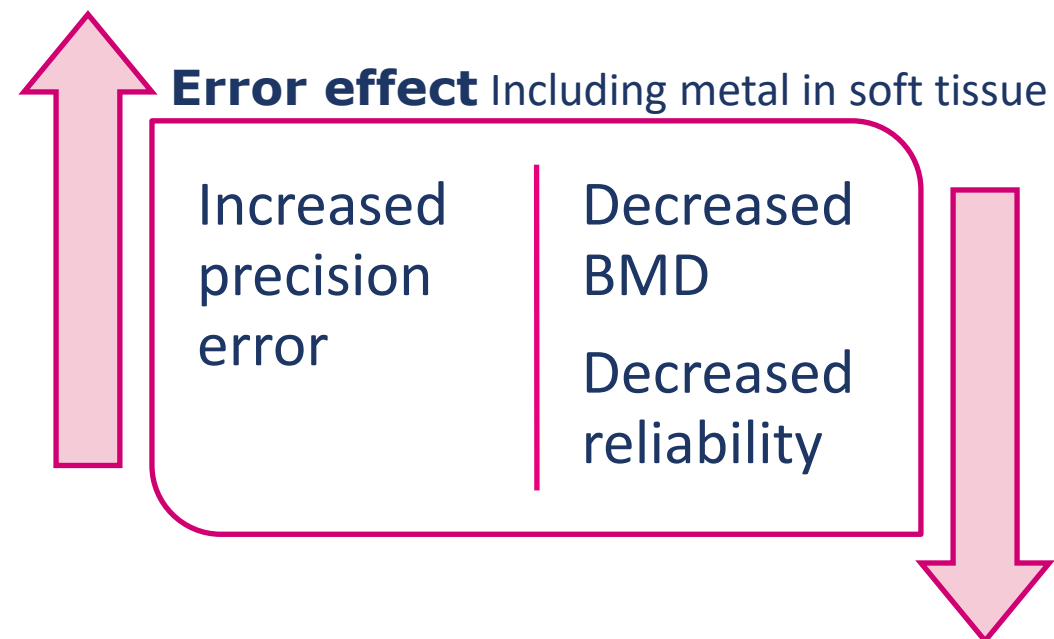


Spine 3

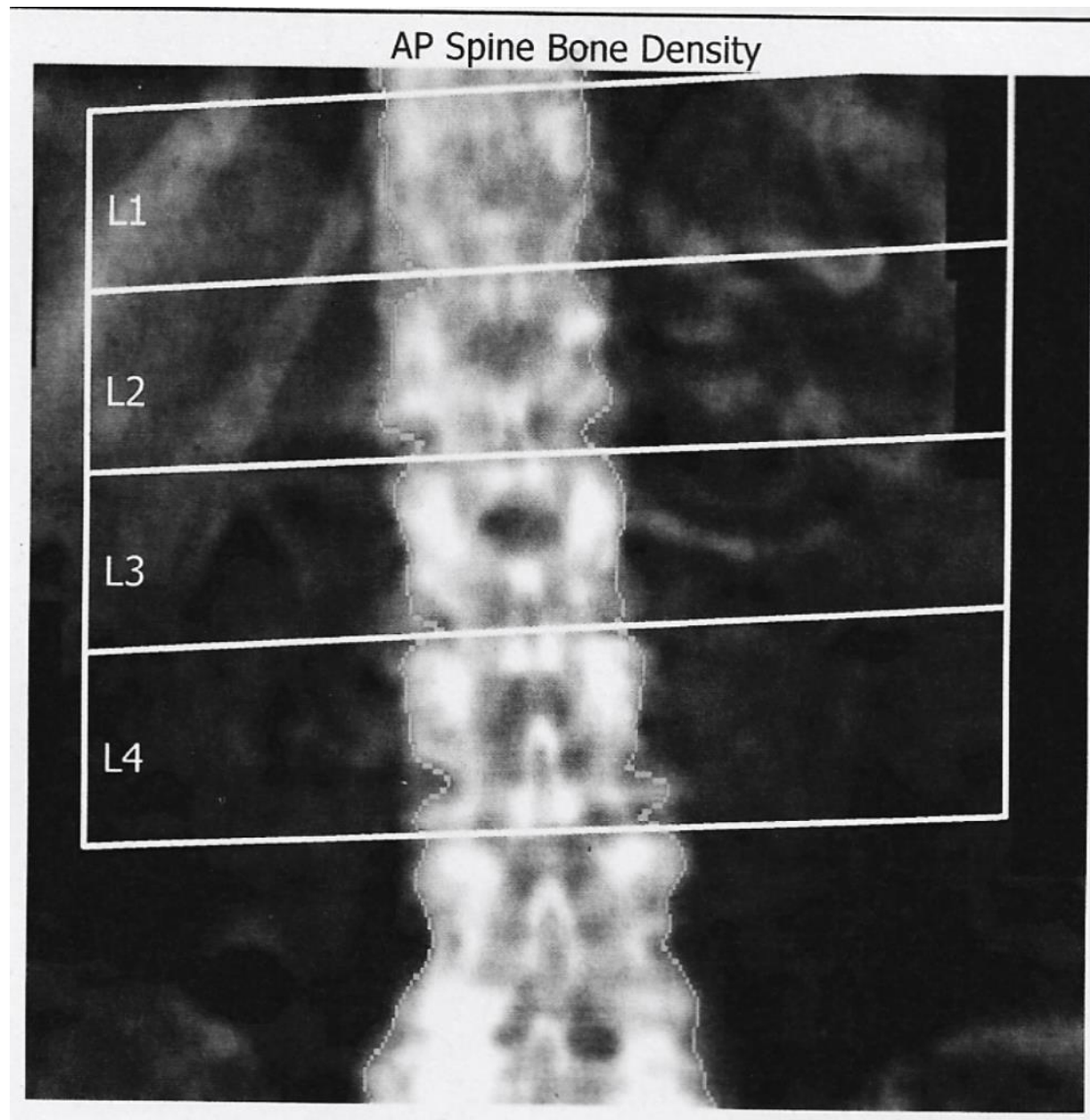
AP Spine Bone Density



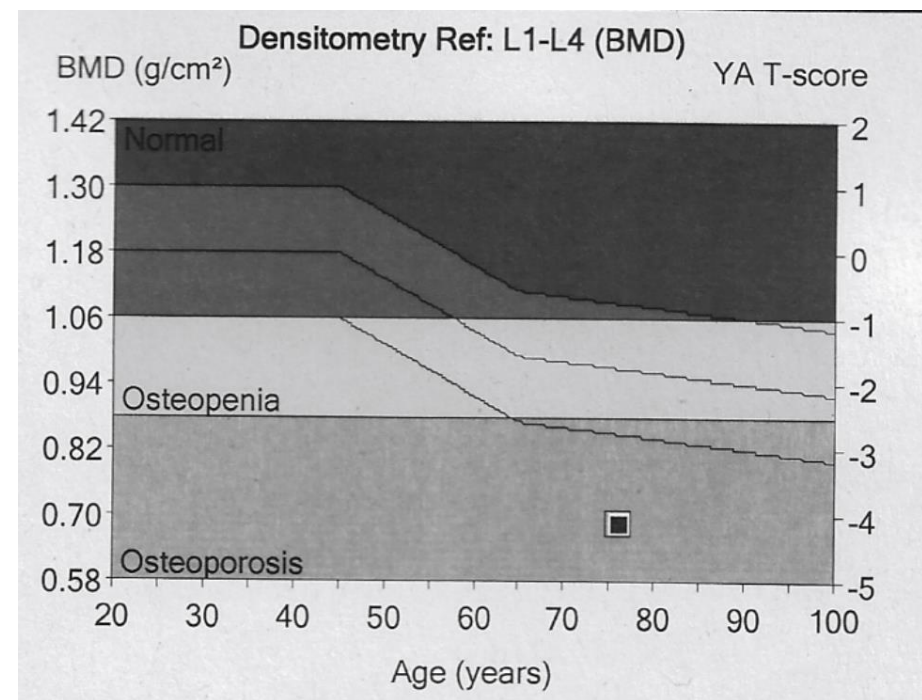
Region	BMD g/cm ²	T-score	Z-score
L1-4 unmarked artefact	0.932	-2.1	-1.9
L1-4 artefact corrected	0.941	-2.0	-1.8



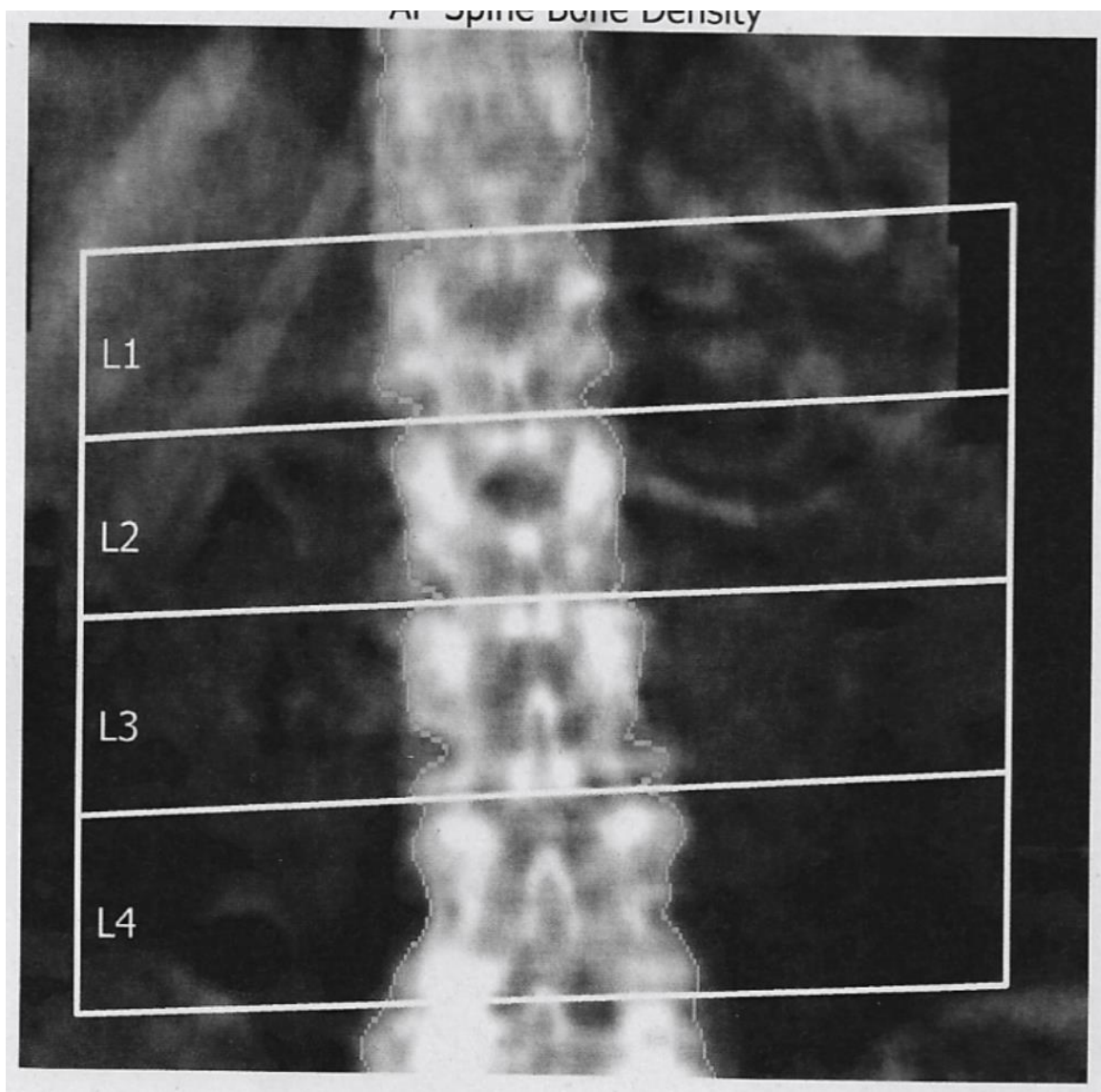
Spine 4



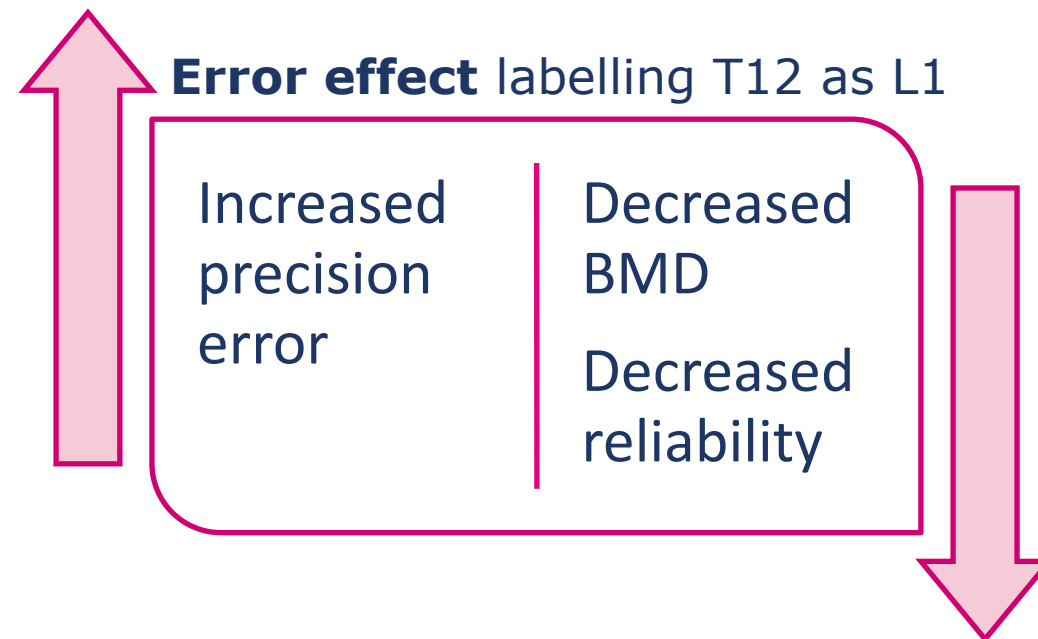
Region	BMD g/cm ²	T-score	Z-score
L1-4	0.685	-4.1	-2.4



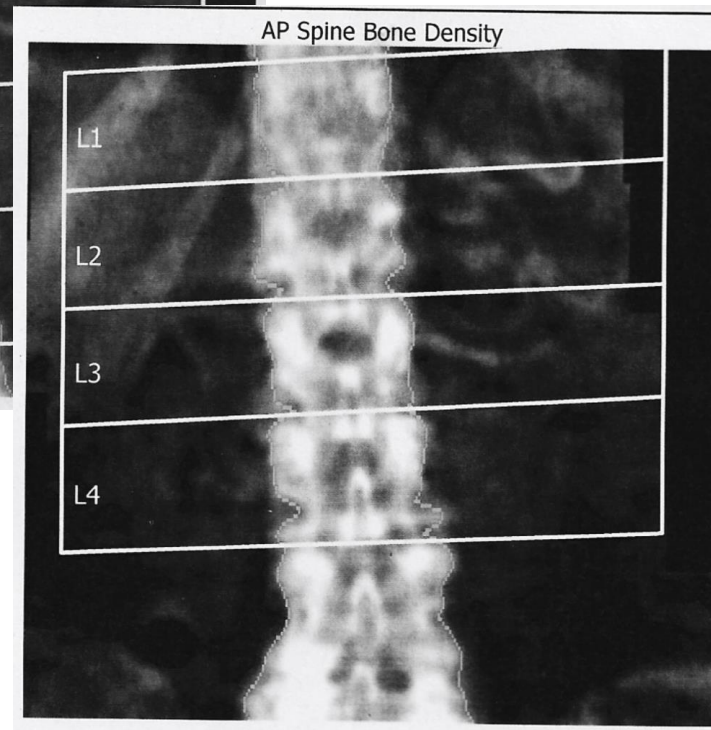
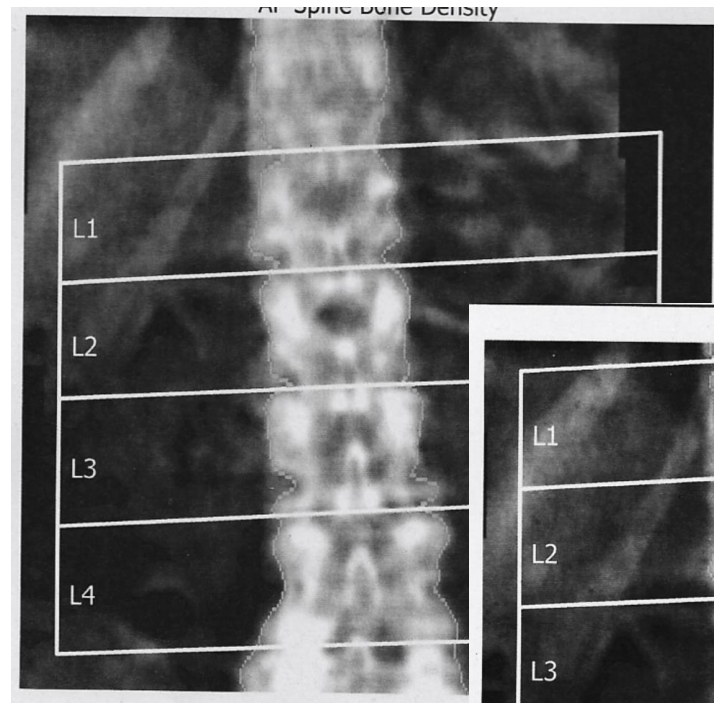
Spine 4



Region	BMD g/cm ²	T-score	Z-score
L1-L4 incorrectly labelled	0.685	-4.1	-2.4
L1-4 corrected	0.746	-3.6	-1.8

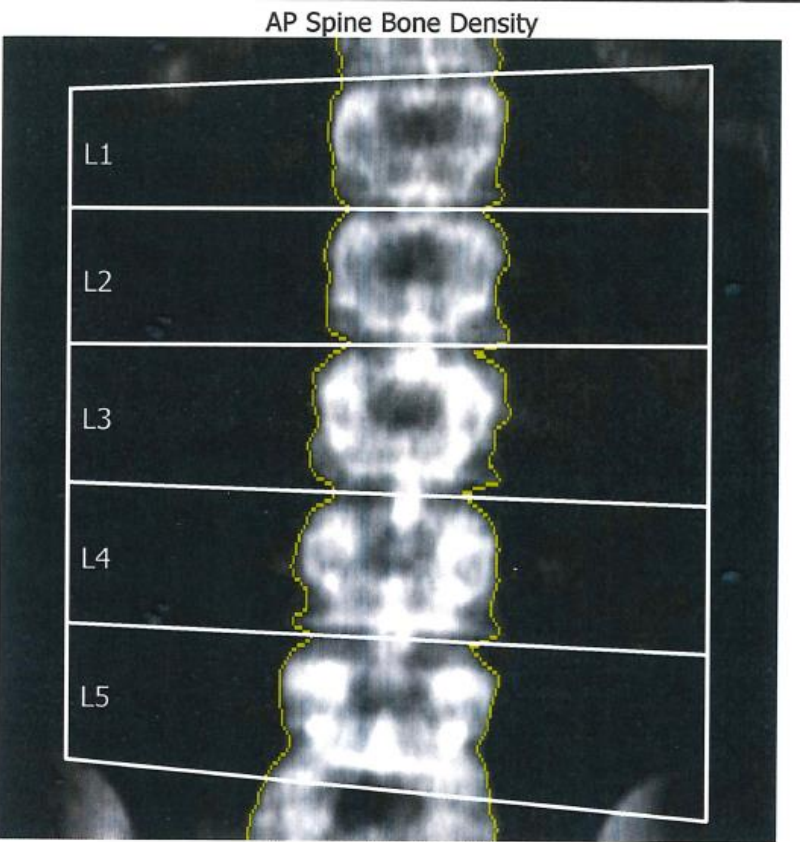


Spine 4

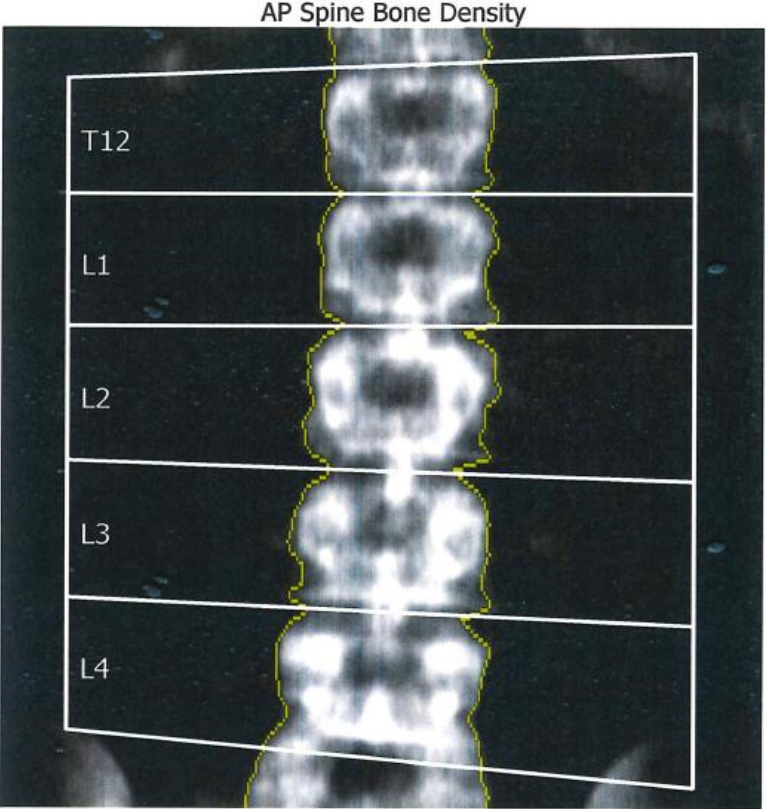


Region		BMD g/cm ²	T-score	% change
T12-L3	Follow-up	0.685	-4.1	8%
L1-4 corrected	baseline	0.746	-3.6	

Spine 4



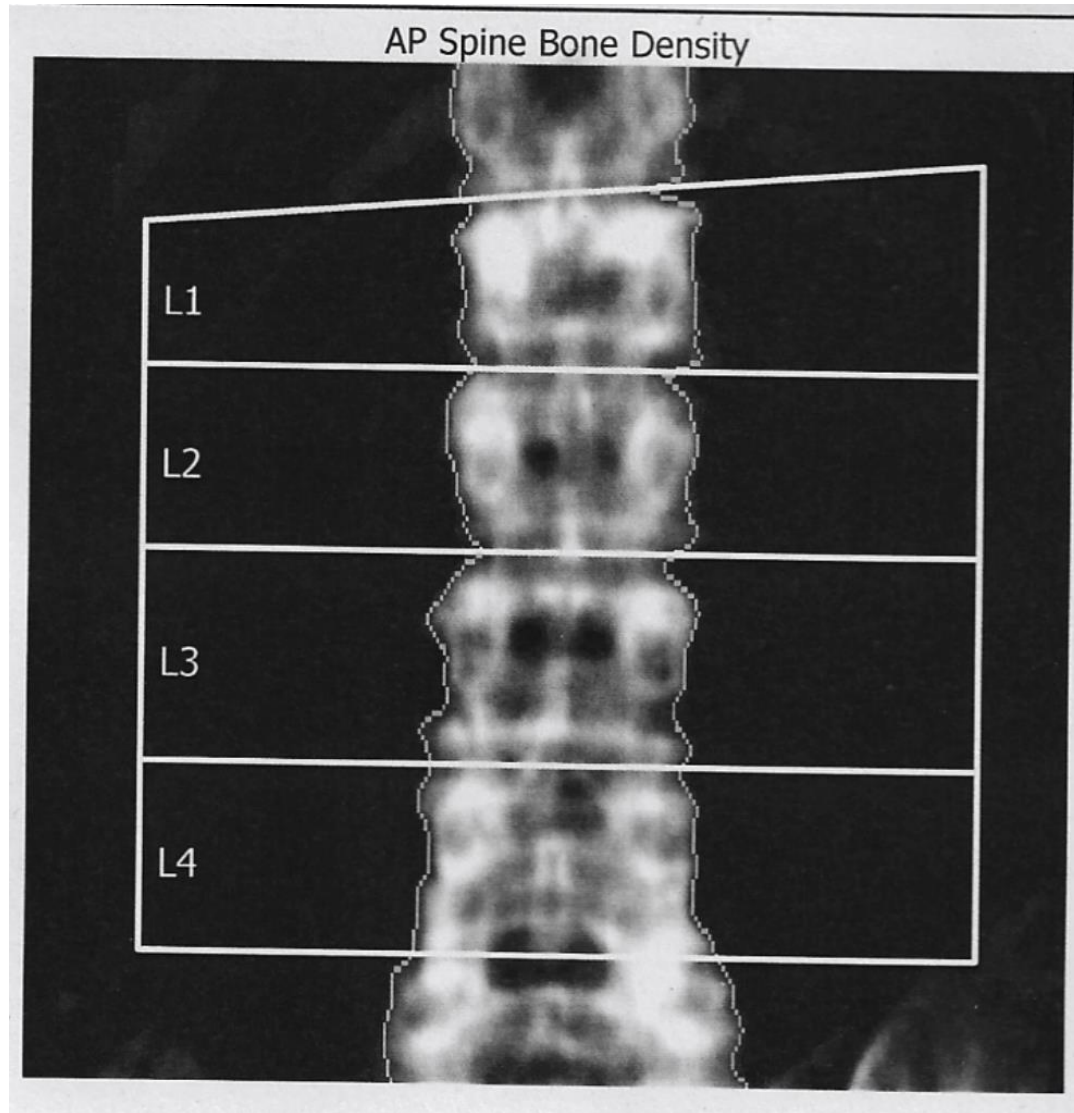
Region	BMD g/cm2	T-score
L1-L4	0.963	-2.5



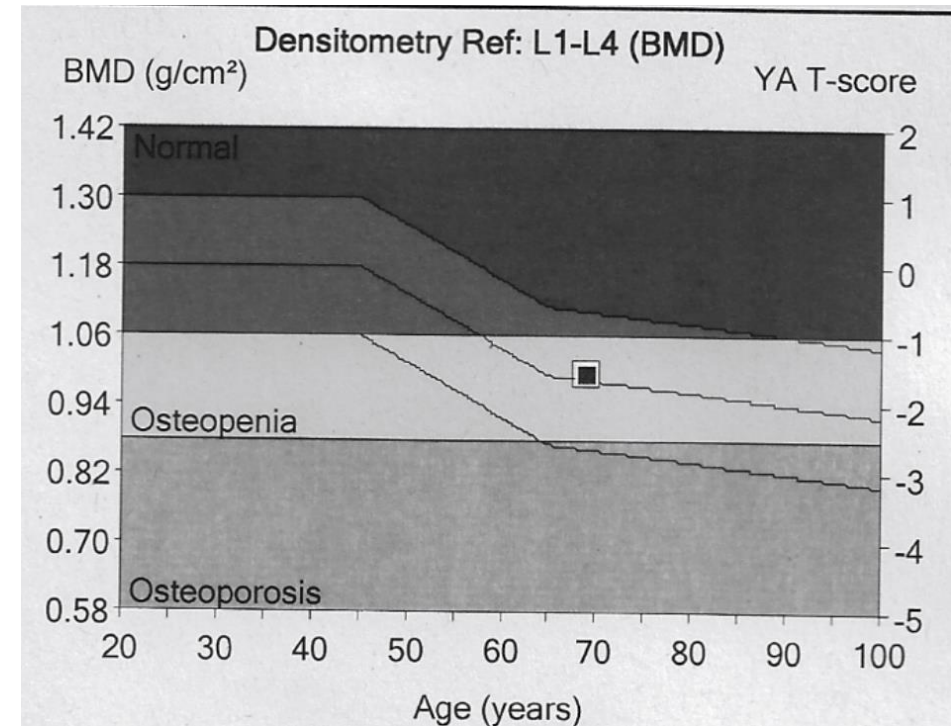
Region	BMD g/cm2	T-score
L1-L4	1.029	-1.7



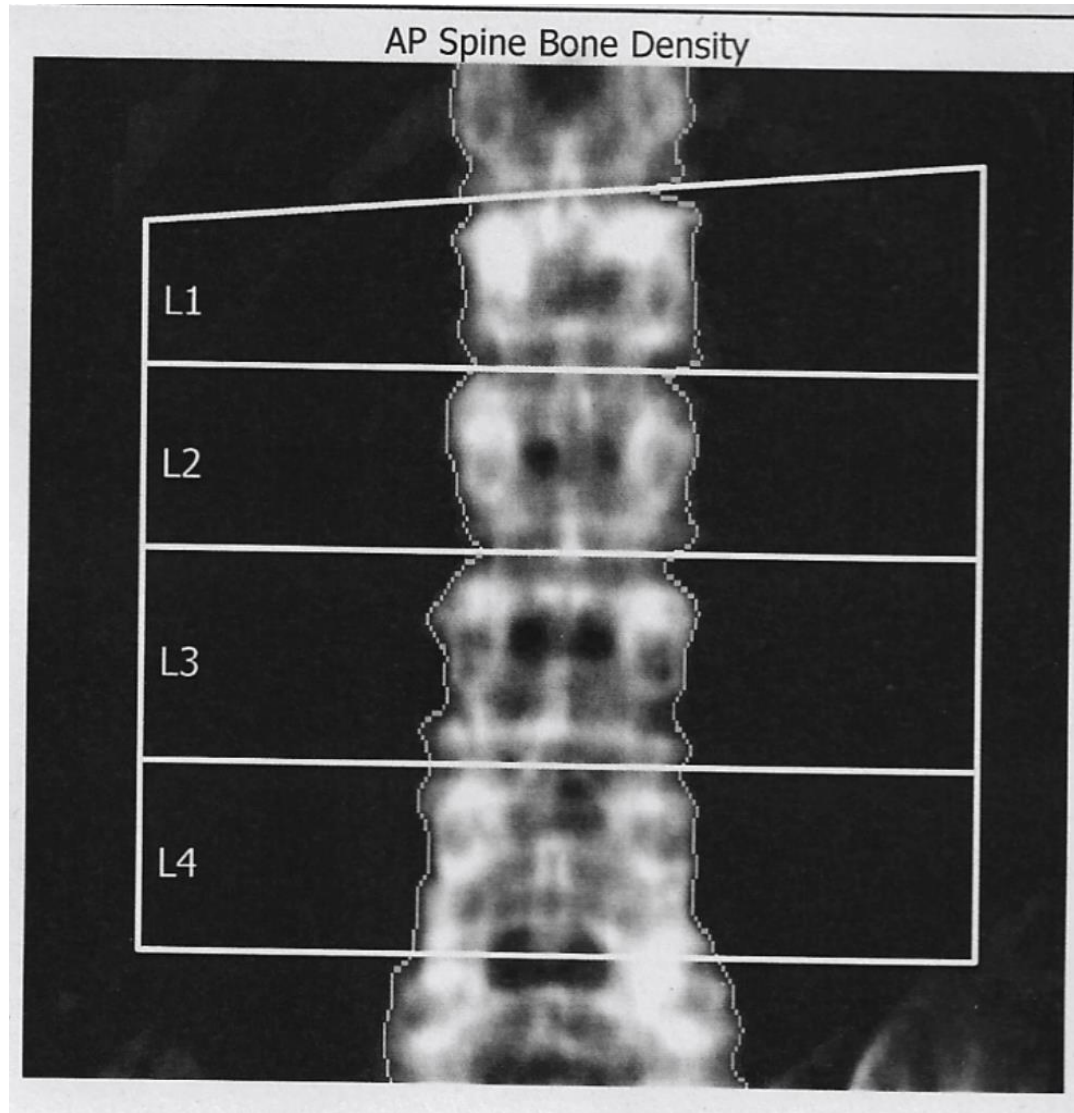
Spine 5



Region	BMD g/cm ²	T-score	Z-score
L1-4	0.992	-1.6	0.1



Spine 5



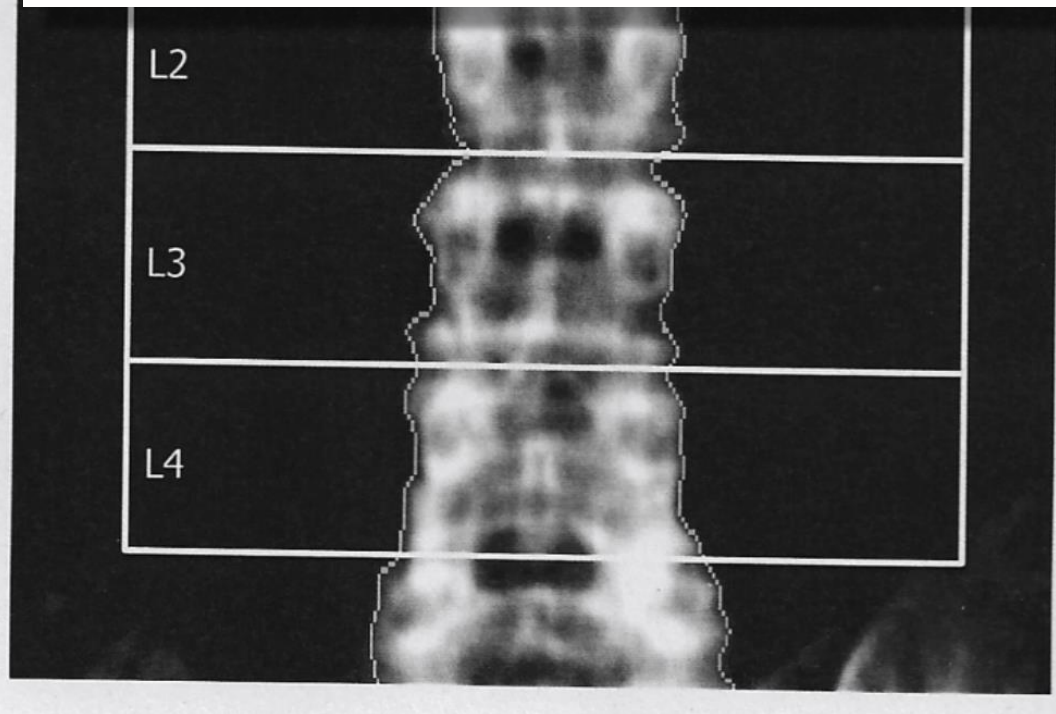
Region	BMD g/cm2	T-score
L1-4	0.992	-1.6
L1		-0.5
L2		-2.4
L3		-2.2
L4		-1.3

Spine 5

AP Spine Bone Density

Vertebrae will be excluded from analysis where:

1. There is a focal abnormality, regardless of the magnitude of impact on BMD. Examples include vertebral fracture, degenerative changes, vertebroplasty and implantable devices such as orthopaedic implants, stents, grafts etc. (illustrated by Figures 2 to 4).



Region	BMD g/cm ²	T-score
L2		-2.4
L3		-2.2
L4		-1.3

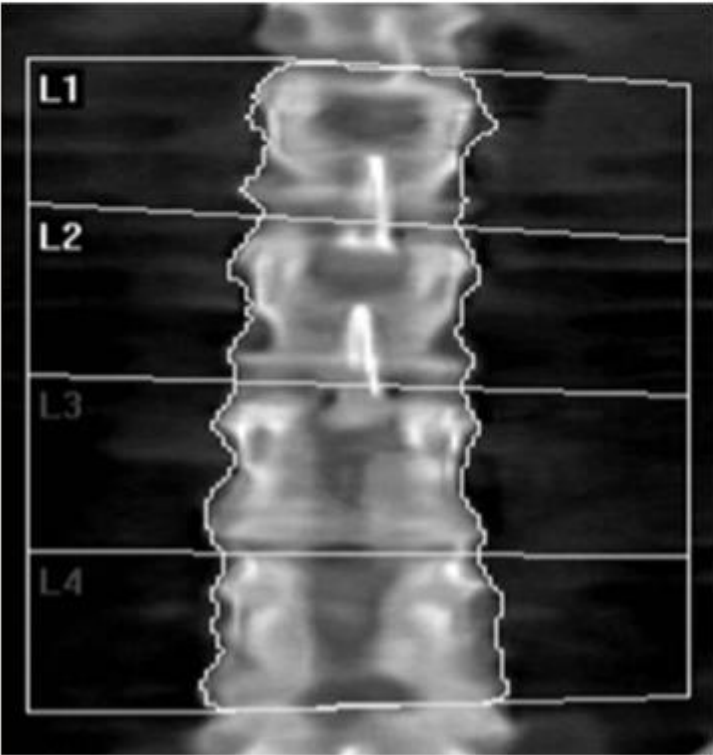
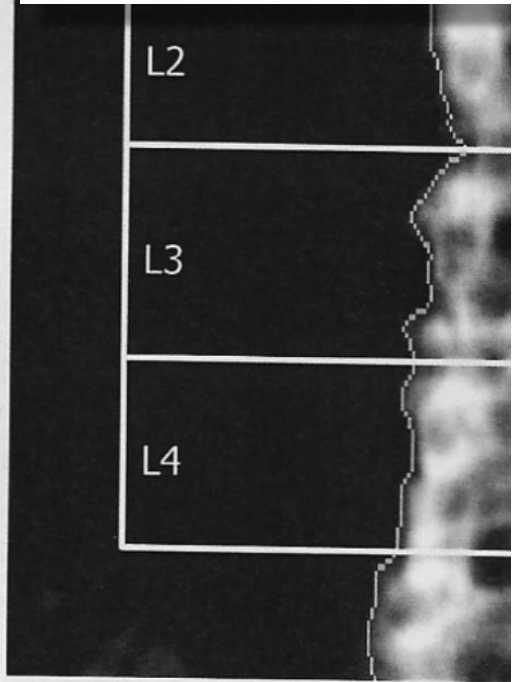
Spine 5

AP Spine

Vertebrae will be excluded if:

- 1. There is a focal abnormality such as fracture, degenerative changes, implants, grafts etc

- 2. The result differs by > 1SD from adjacent vertebra(e) and there is a visible abnormality to inform which vertebra(e) to exclude¹⁰ (illustrated in Figure 5).



T-score	
L1	-1.4
L2	-1.3
L3	-2.5
L4	-2.6

g/cm ²	T-score
-------------------	---------

Low BMD. Examples include vertebral fractures, such as orthopaedic implants,

	-2.4
	-2.2
	-1.3

Spine 5

AP Spine

Vertebrae will be excluded

1. There is a focal fracture, degenerative changes, stents, grafts etc

2. The result is not reliable for the vertebrae to inform the score (illustrated in Figure 6).

3. There is an artefact overlying the vertebra(e) or in the soft tissue adjacent to the vertebra(e) affecting the validity of the measurement in accordance with the manufacturer's user manual (illustrated in Figure 6).

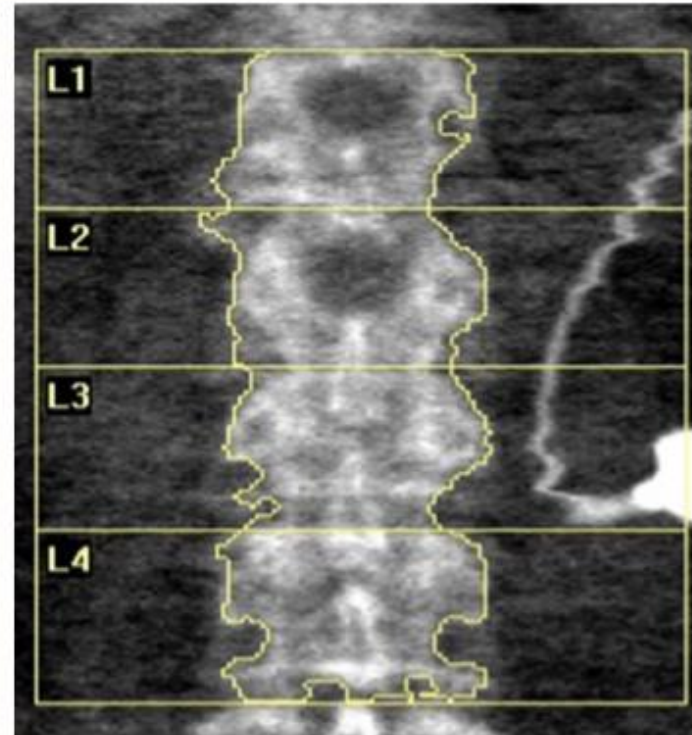
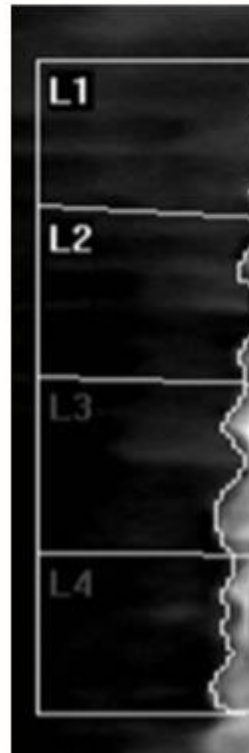


Figure 6: DXA image showing soft tissue artefact from gastric band adjacent to L1 to 3

Score

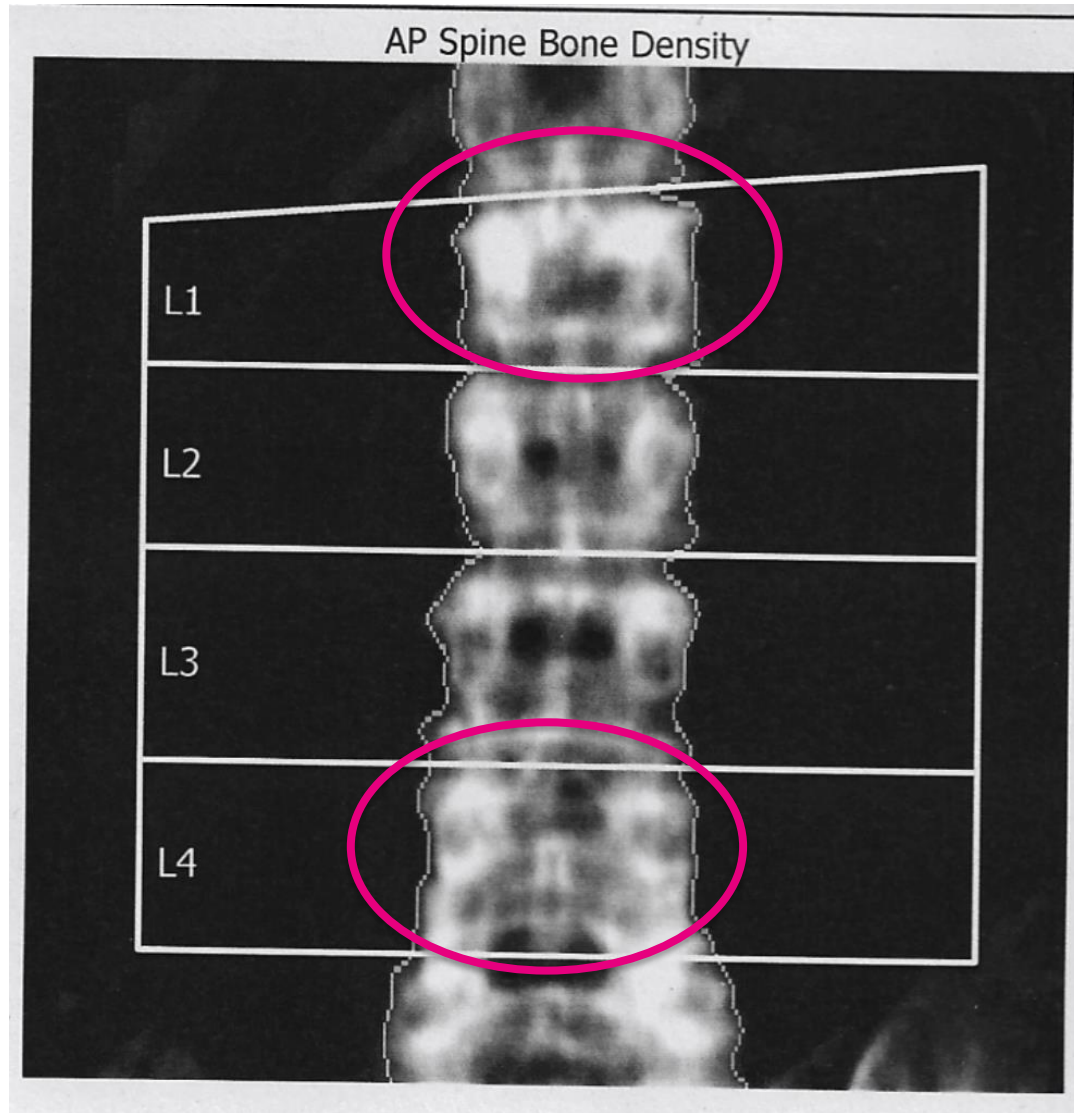
include vertebral
haedic implants,

2.4

2.2

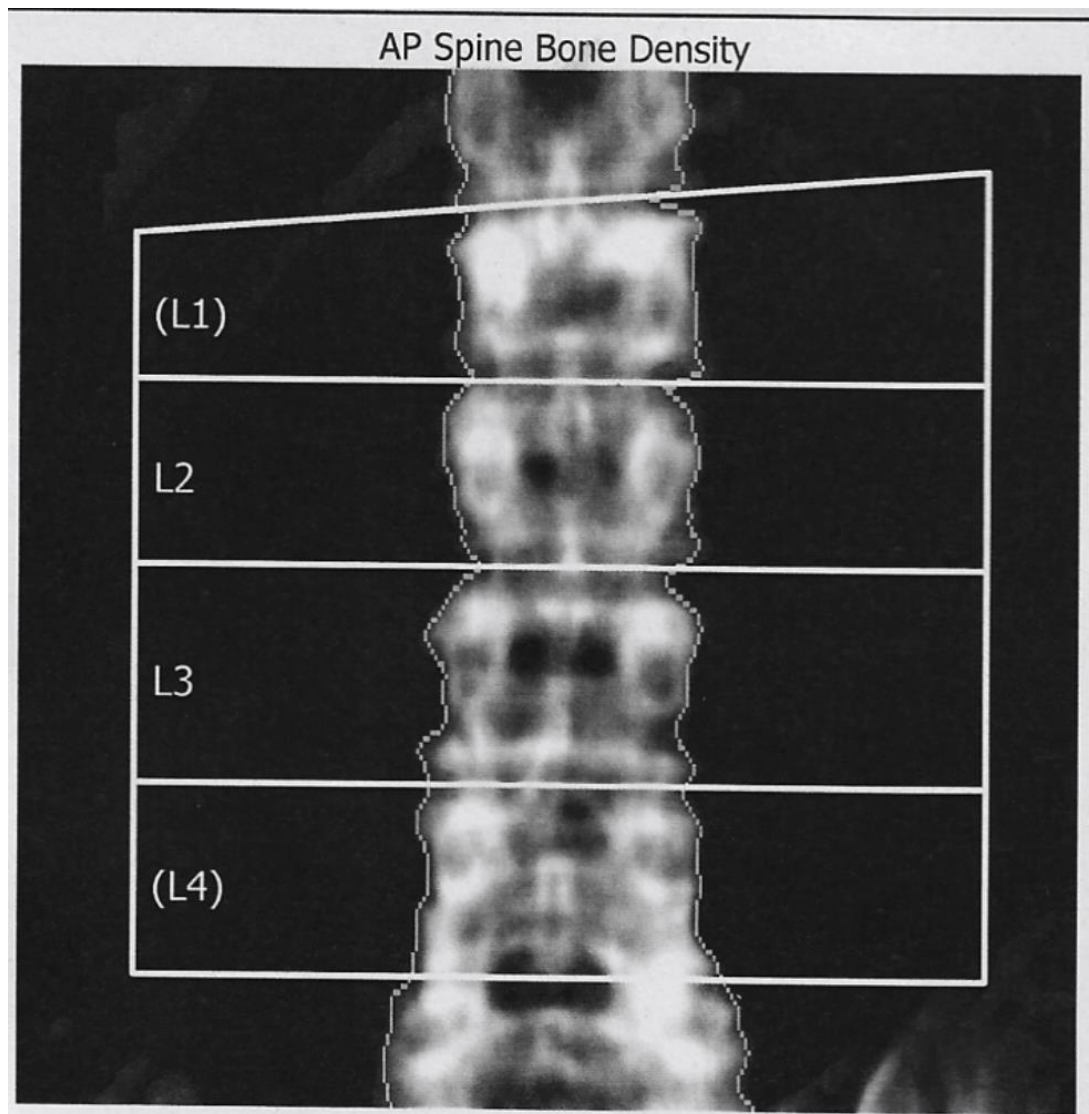
1.3

Spine 5

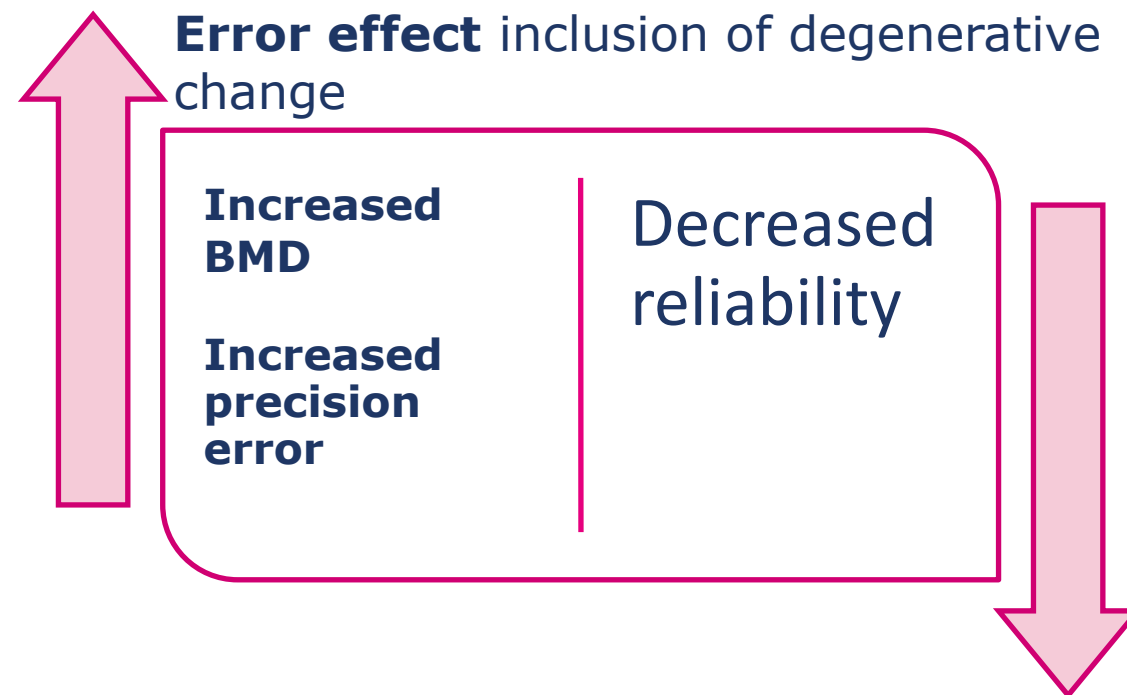


Region	BMD g/cm2	T-score
L1-4	0.992	-1.6
L1		-0.5
L2		-2.4
L3		-2.2
L4		-1.3

Spine 5

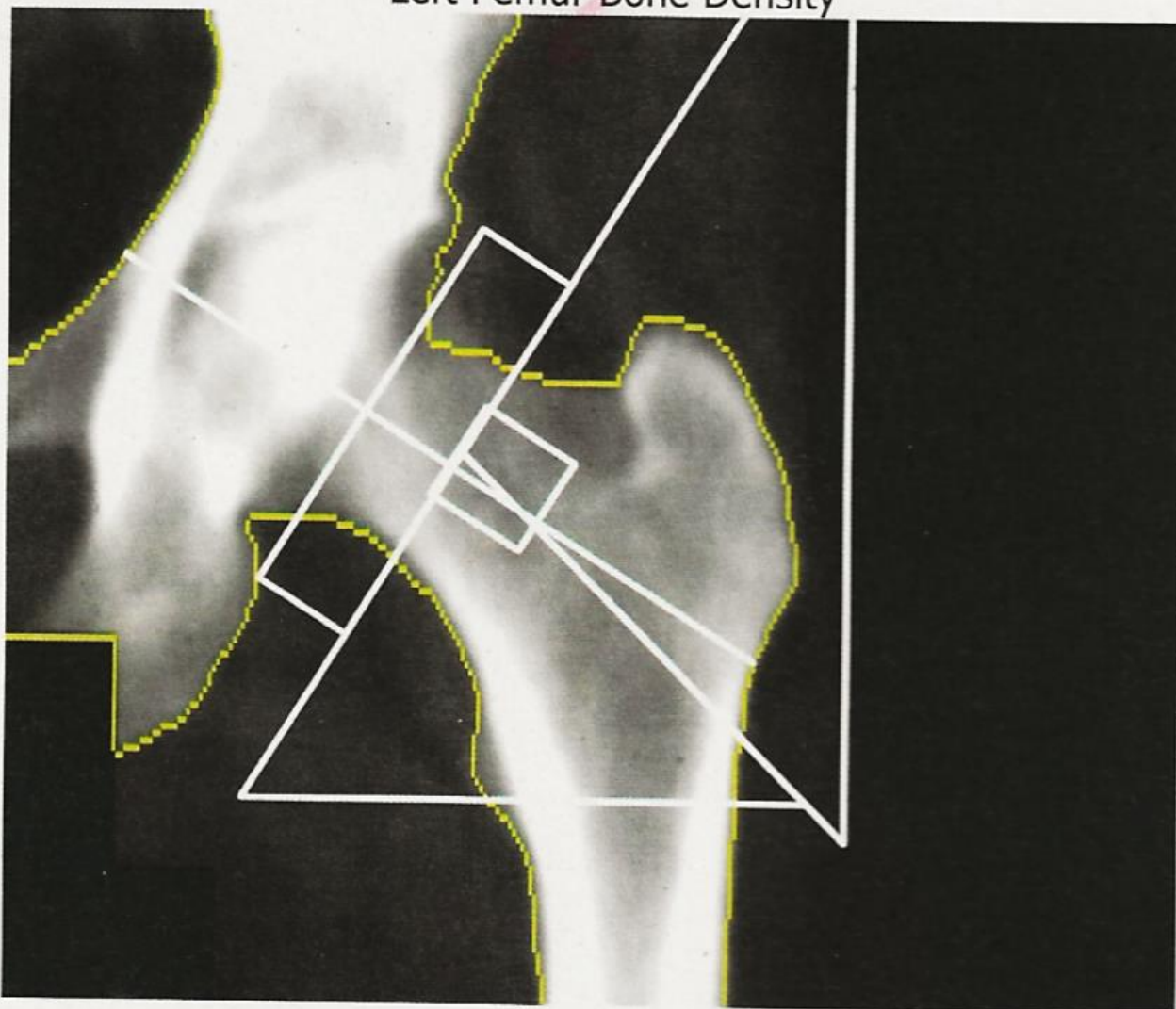


Region	BMD g/cm ²	T-score	Z-score
L1-4	0.992	-1.6	0.1
L2-3	0.926	-2.3	-0.6

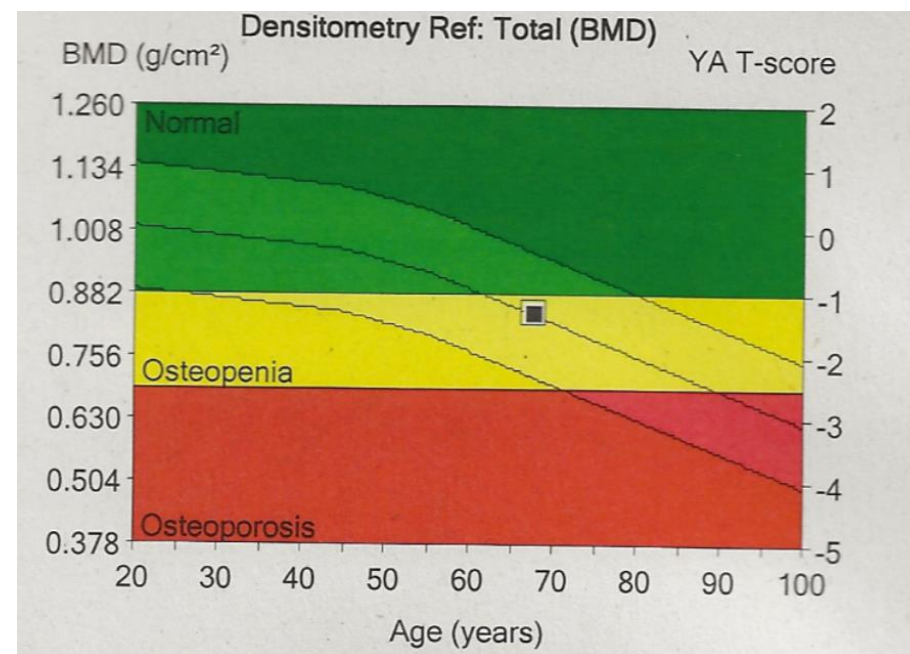


Femur 1

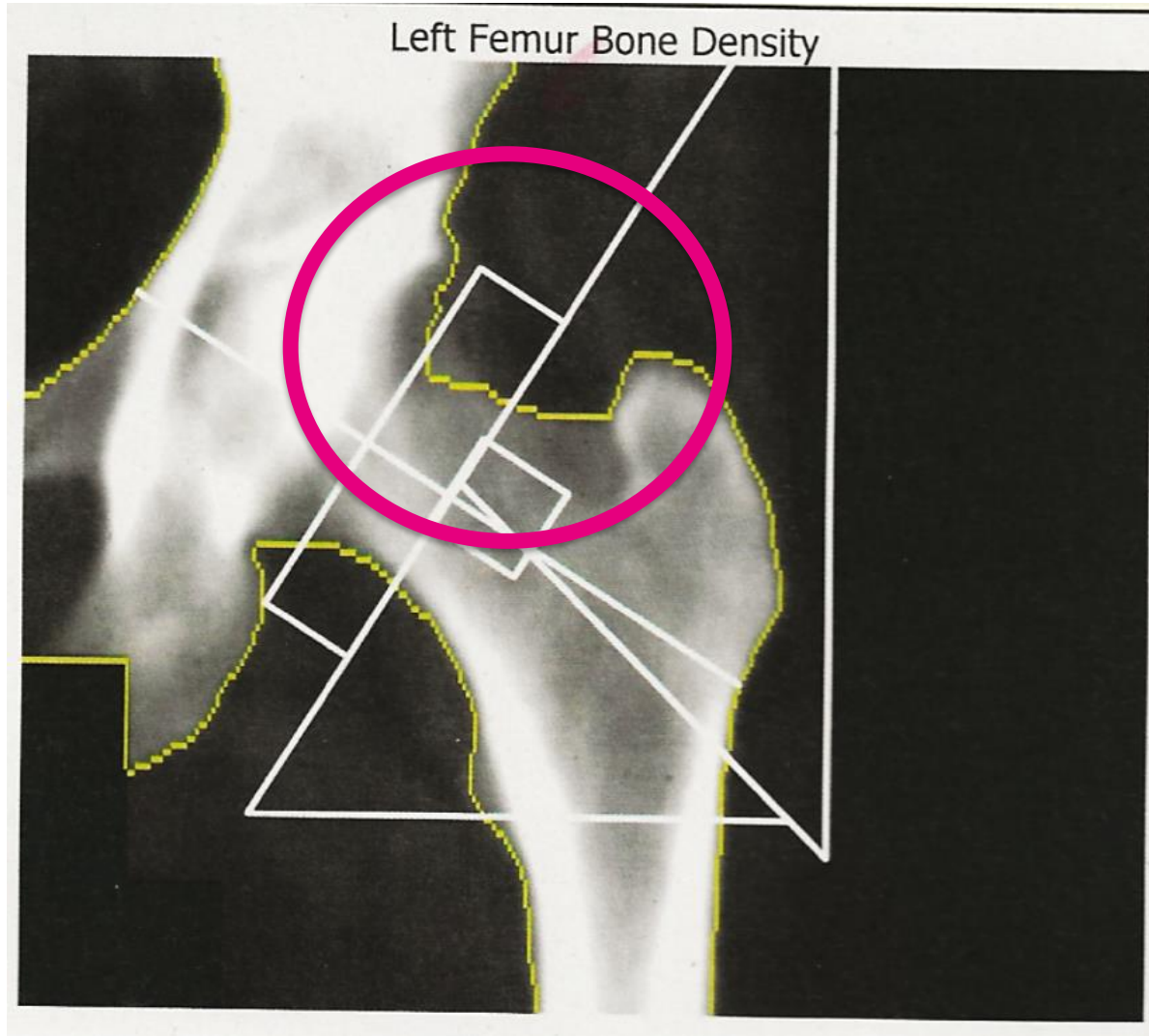
Left Femur Bone Density



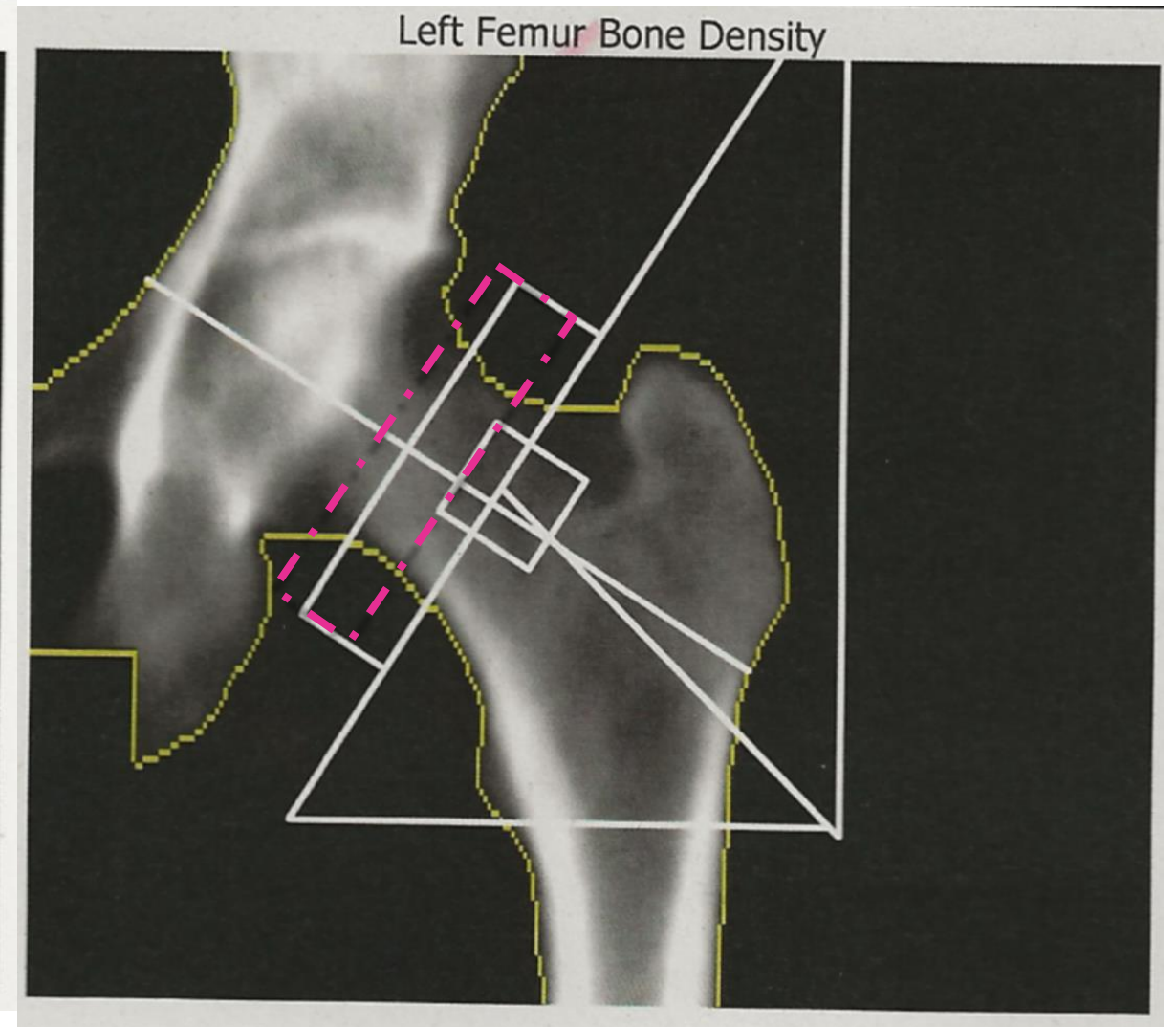
Region	BMD g/cm2	T-score
Total	0.992	-1.6
NOF	0.819	-1.6



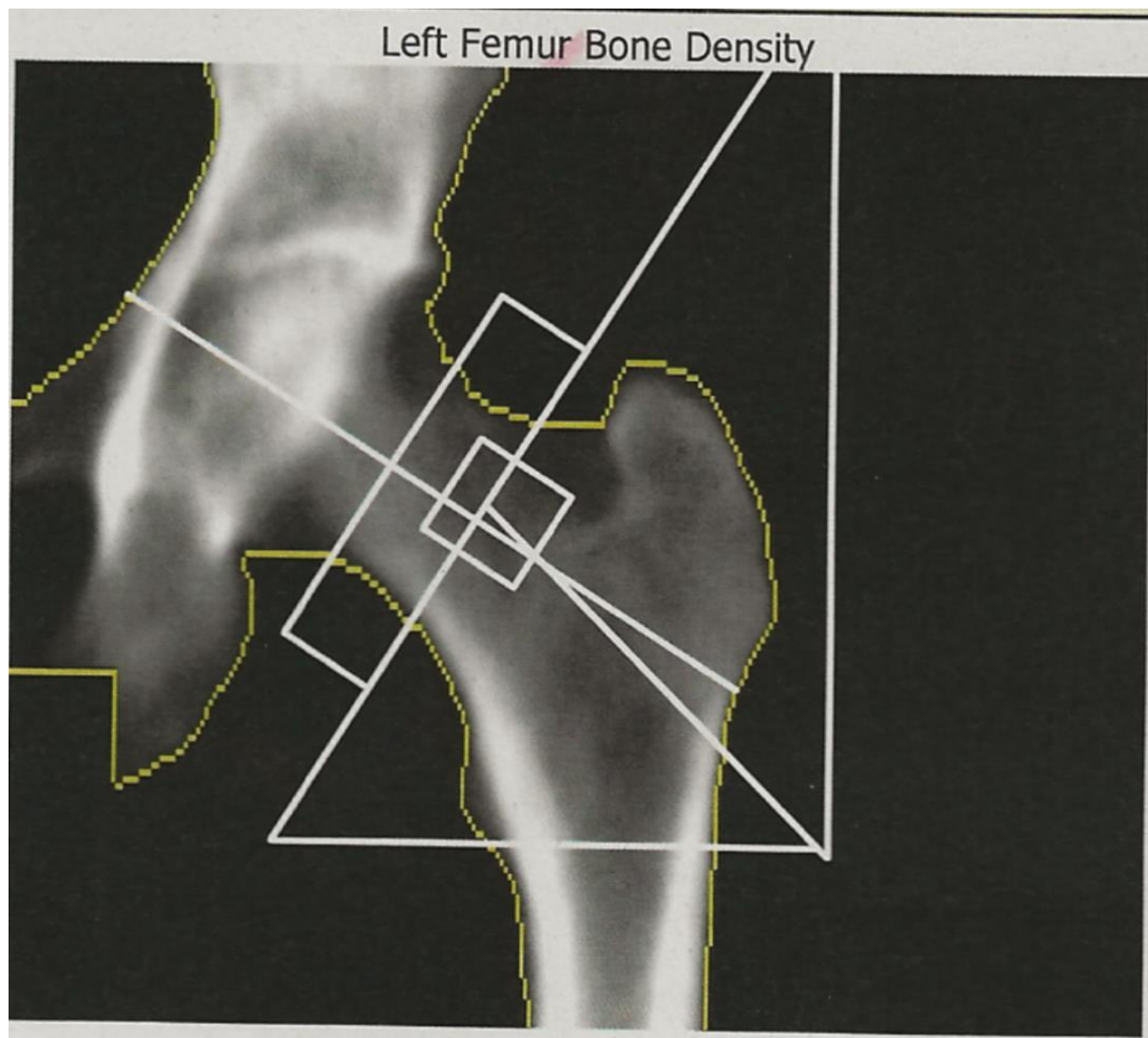
Femur 1



FN box measuring bone as ST and incorrect place



Femur 1



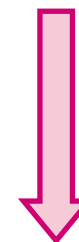
Region	BMD g/cm2	T-score
Total Incorrectly placed	0.846	-1.3
Total Corrected	0.851	-1.2
NOF Incorrectly placed	0.819	-1.6
NOF Corrected	0.783	-1.8

**Error effect poor bone map & incorrect
FN box placement**



Increases NOF
BMD

Decreases
Total BMD



Femur 1

Effect on fracture risk assessment using FRAX

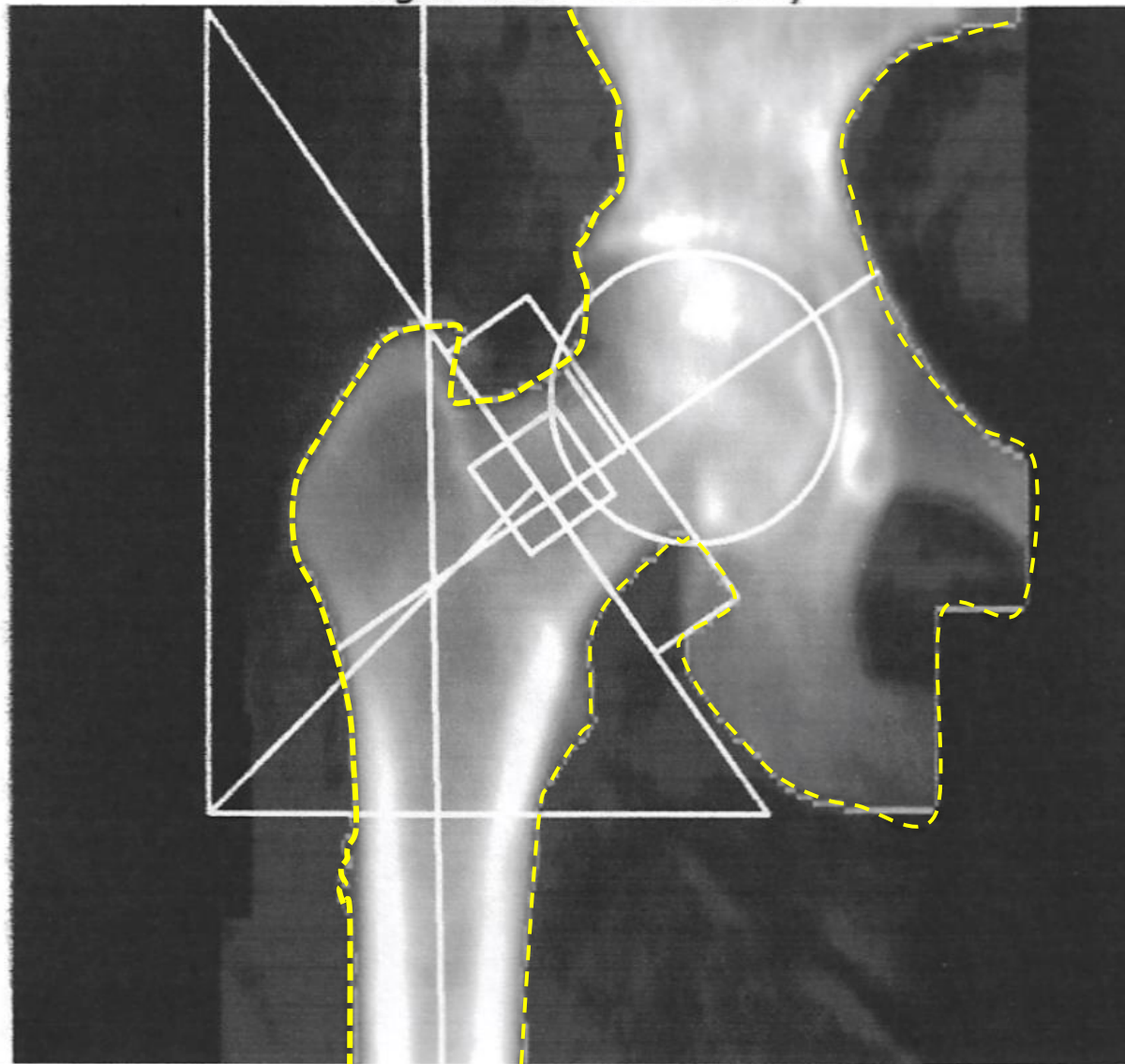
Risk factors:

female, ages 67 years with fragility fracture

Region	BMD g/cm2	T-score	FRAX major osteoporotic fracture	FRAX hip fracture
NOF Incorrectly placed	0.819	-1.6	14.3%	2.1%
NOF Corrected	0.783	-1.8	15.8%	2.7%

Femur 2

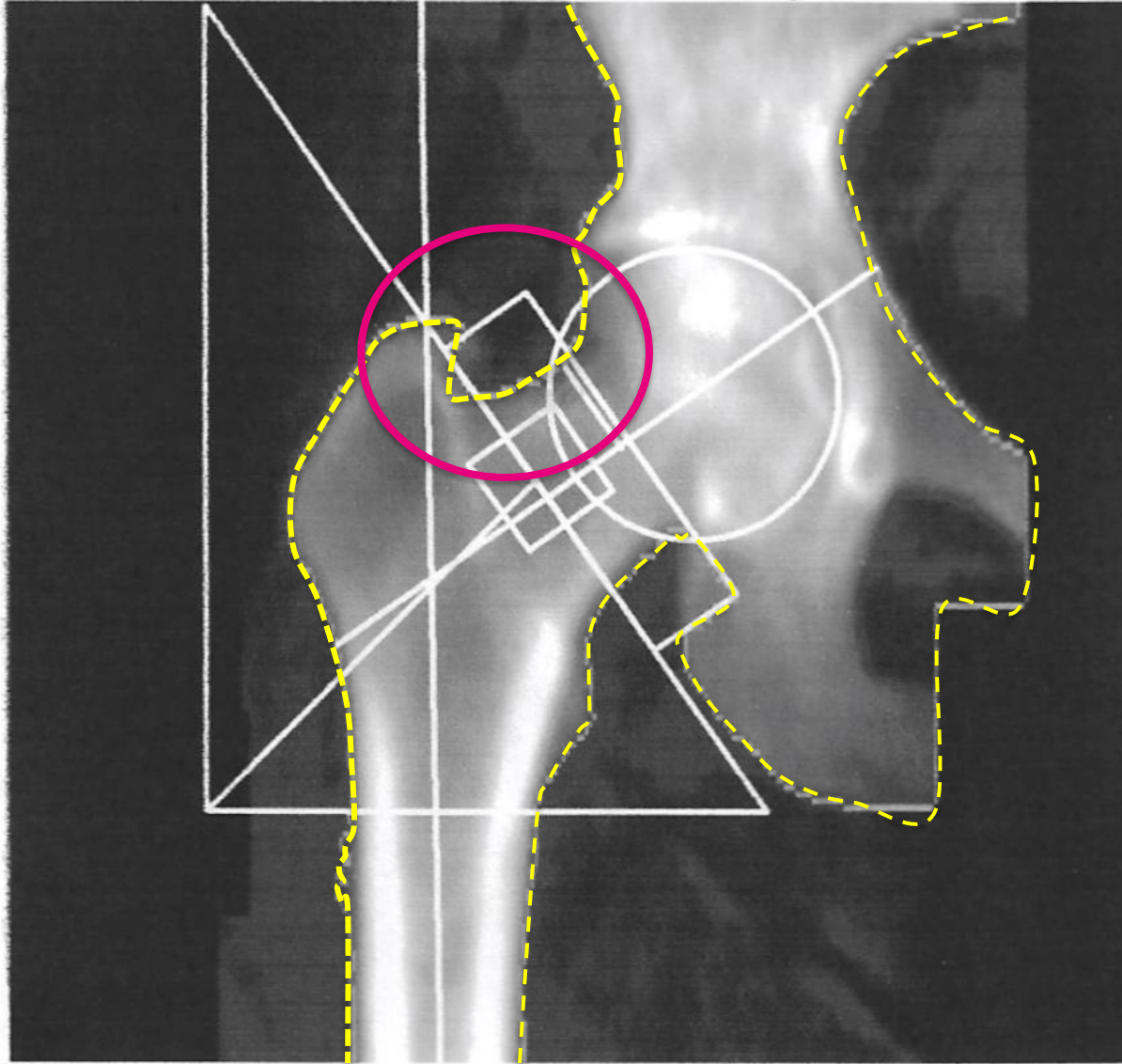
Right Femur Bone Density



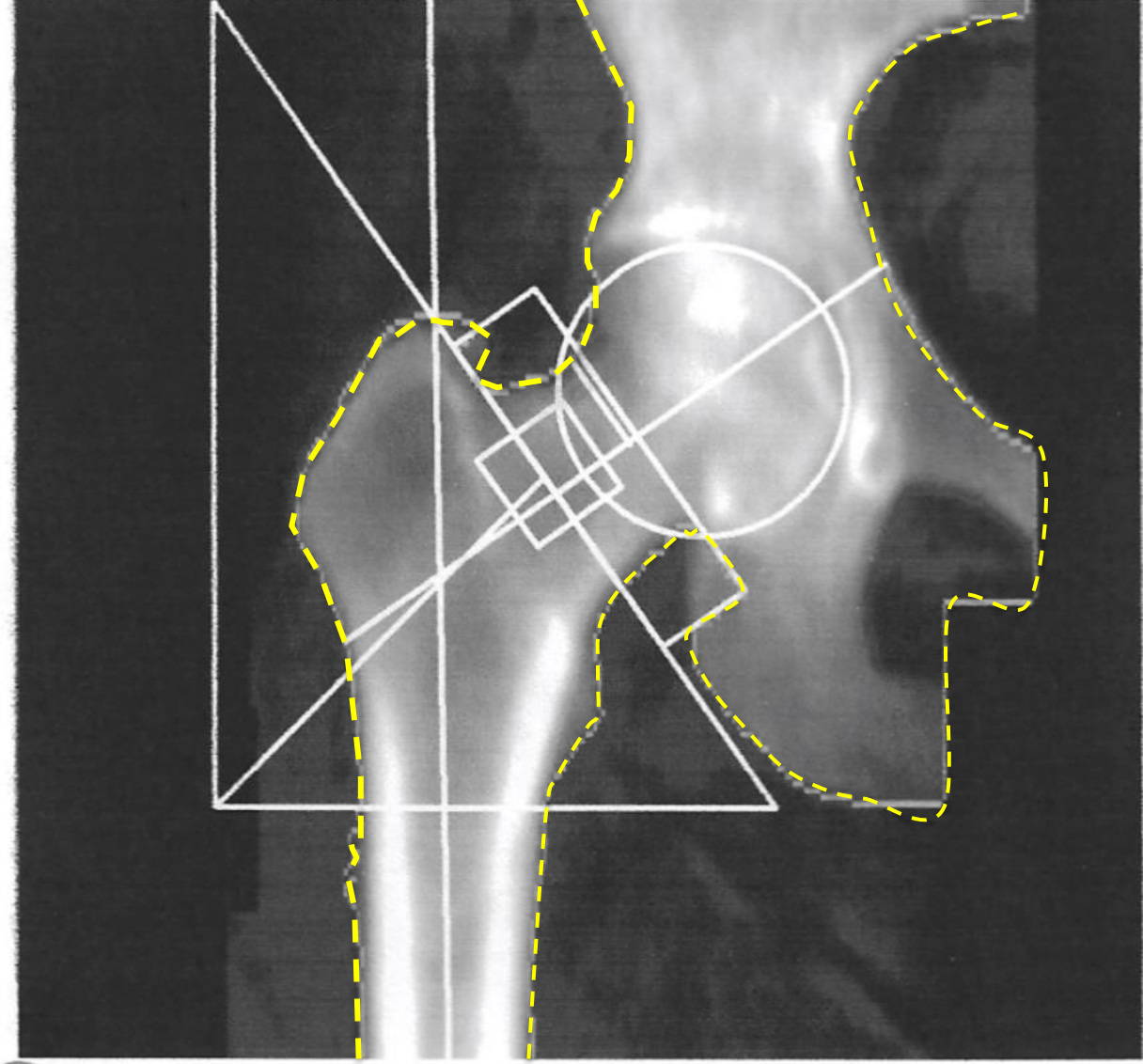
Region	BMD g/cm2	T-score
Total	1.174	1.3
NOF	1.108	0.5

Femur 2

Right Femur Bone Density

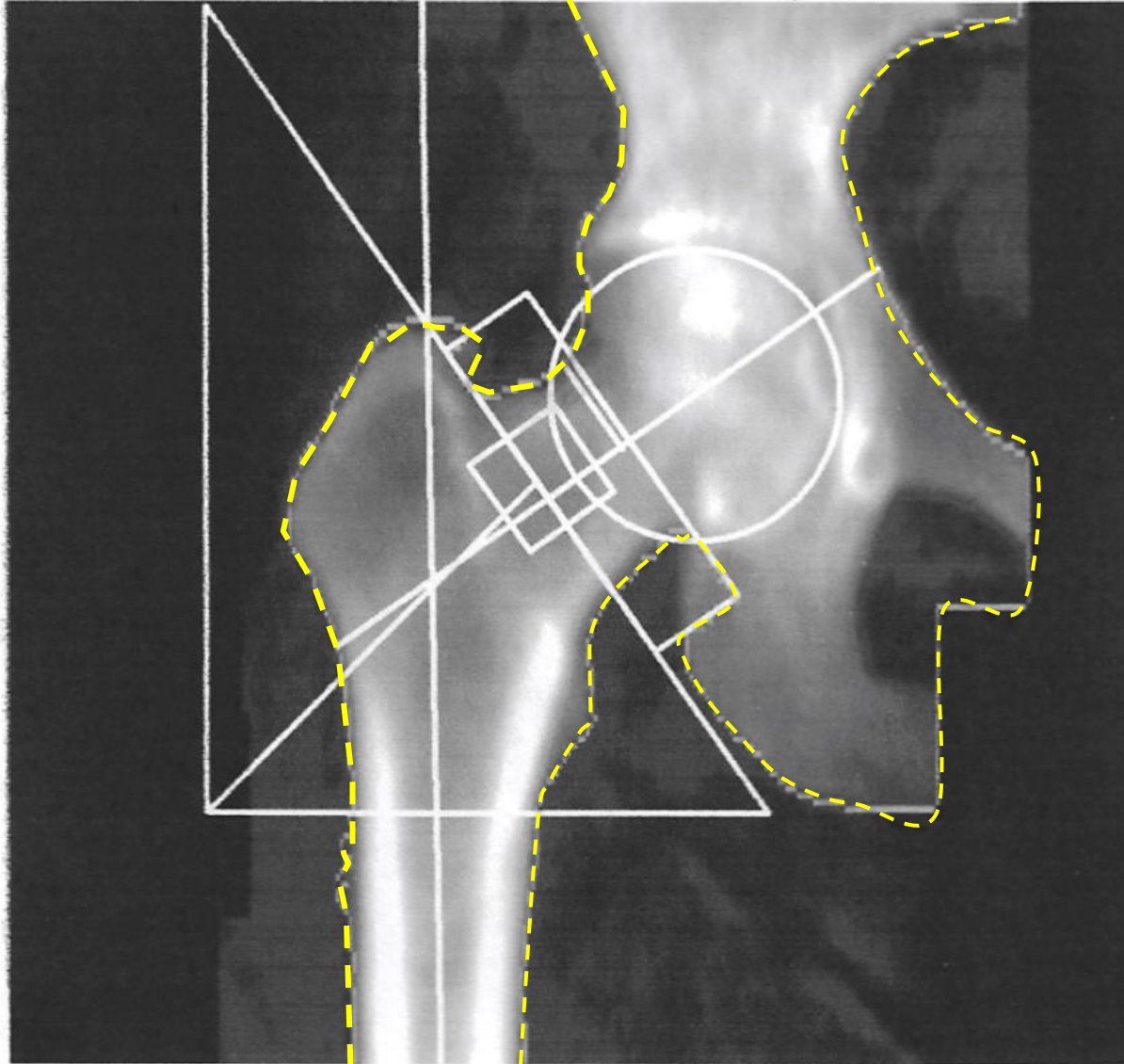


Right Femur Bone Density



Femur 2

Right Femur Bone Density



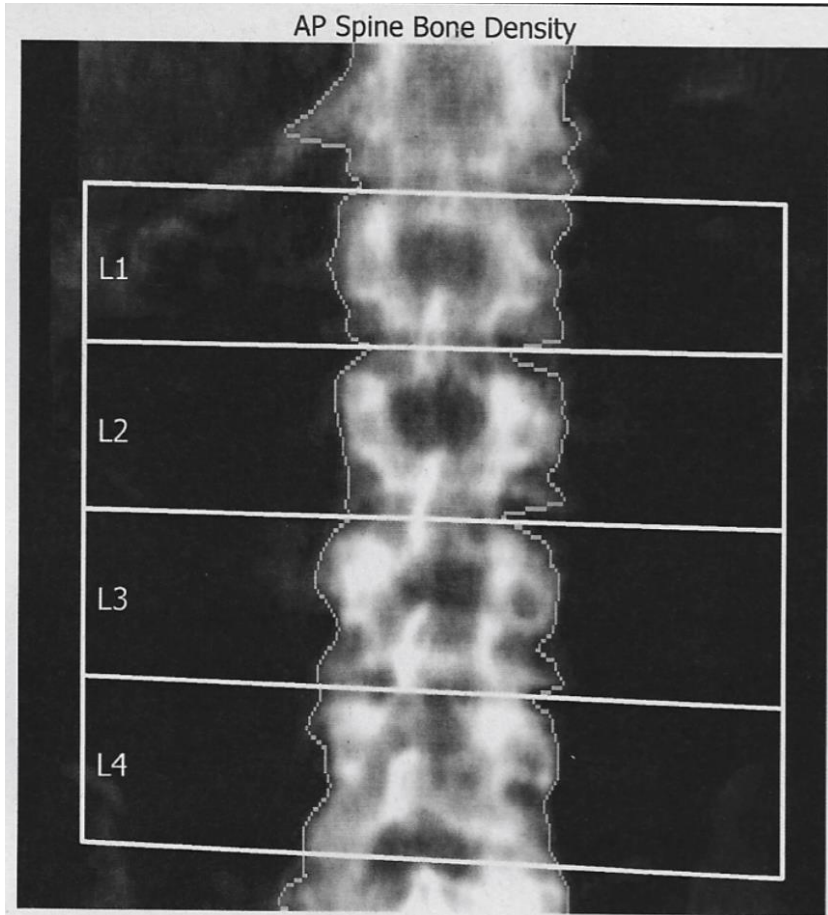
Error effect: poor bone map deleting greater trochanter

Incorrect total
hip
measurement

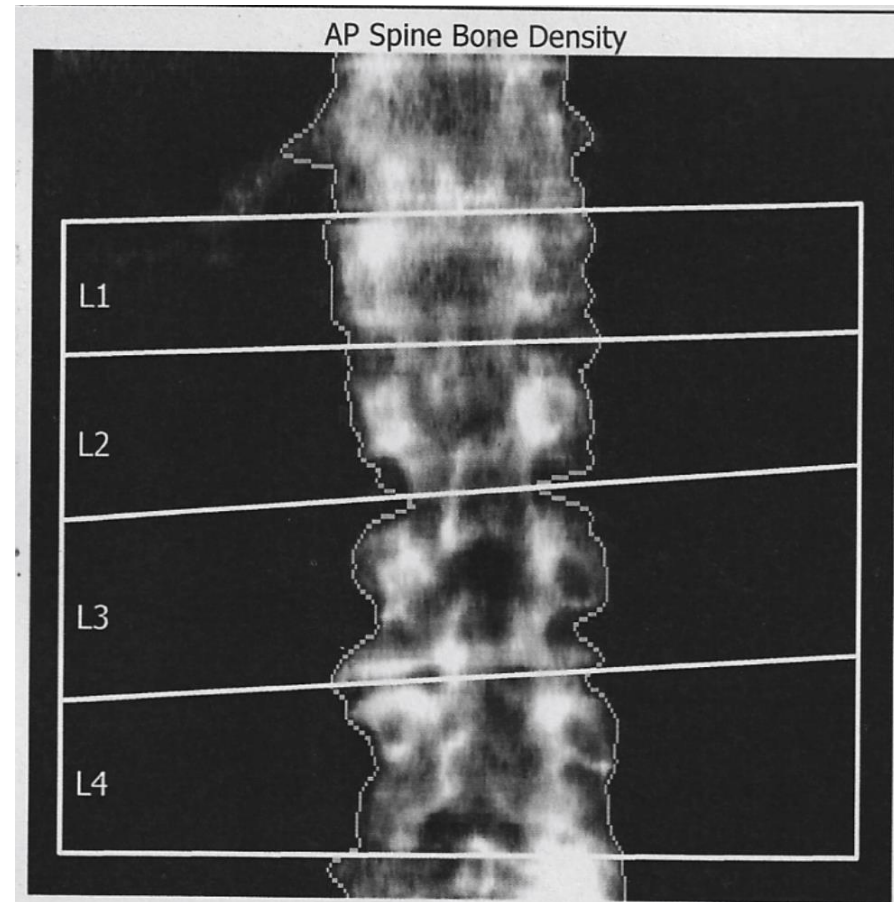
?? Effect on
BMD

Decreased
reliability of
NOF
measurement

Follow up case 1

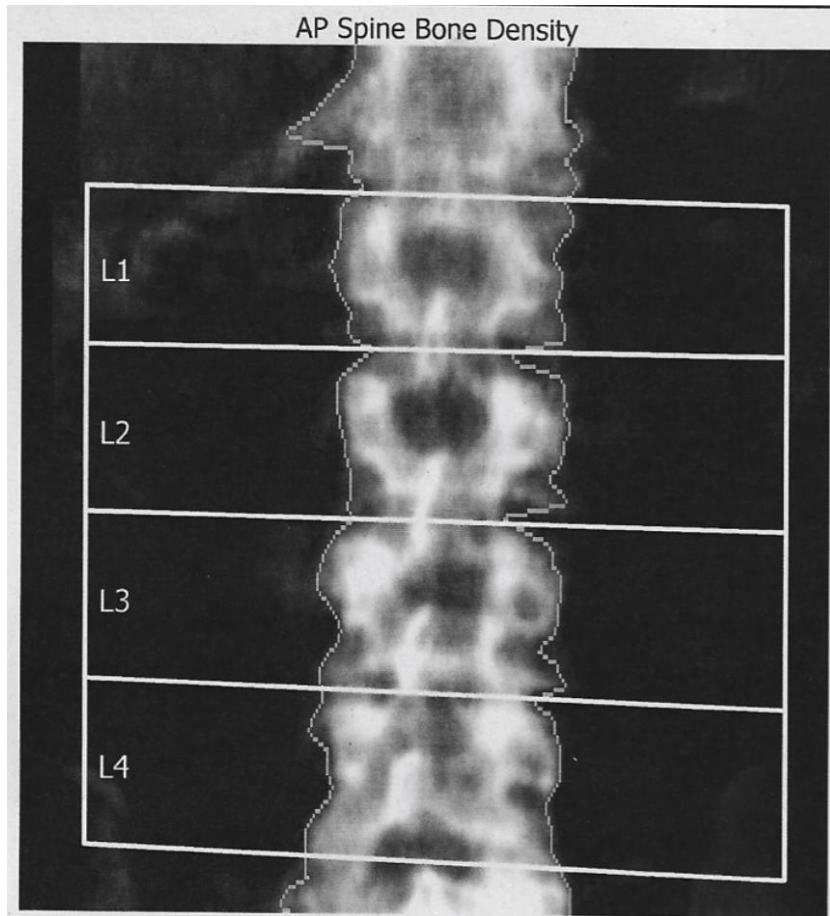


Region	BMD g/cm ²	T-score	Z-score
L1-4	1.026	-1.6	-1.5

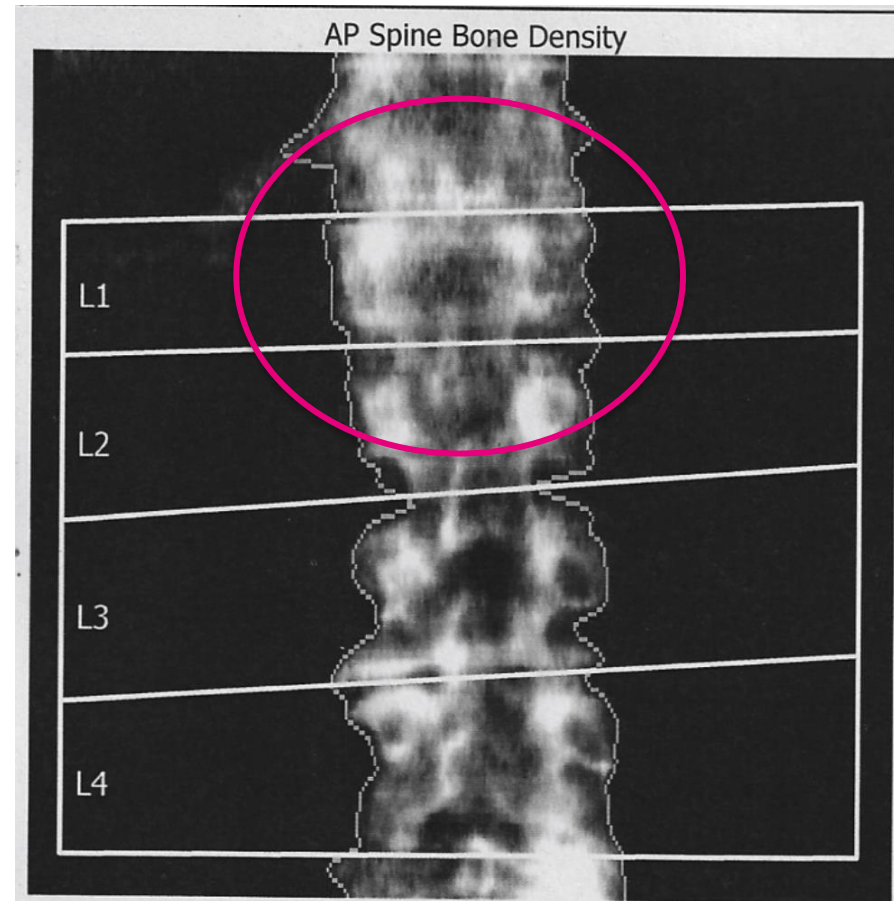


Region	BMD g/cm ²	T-score	Z-score	% change
L1-4	0.959	-2.2	-2	-6.5 %

Follow up case 1

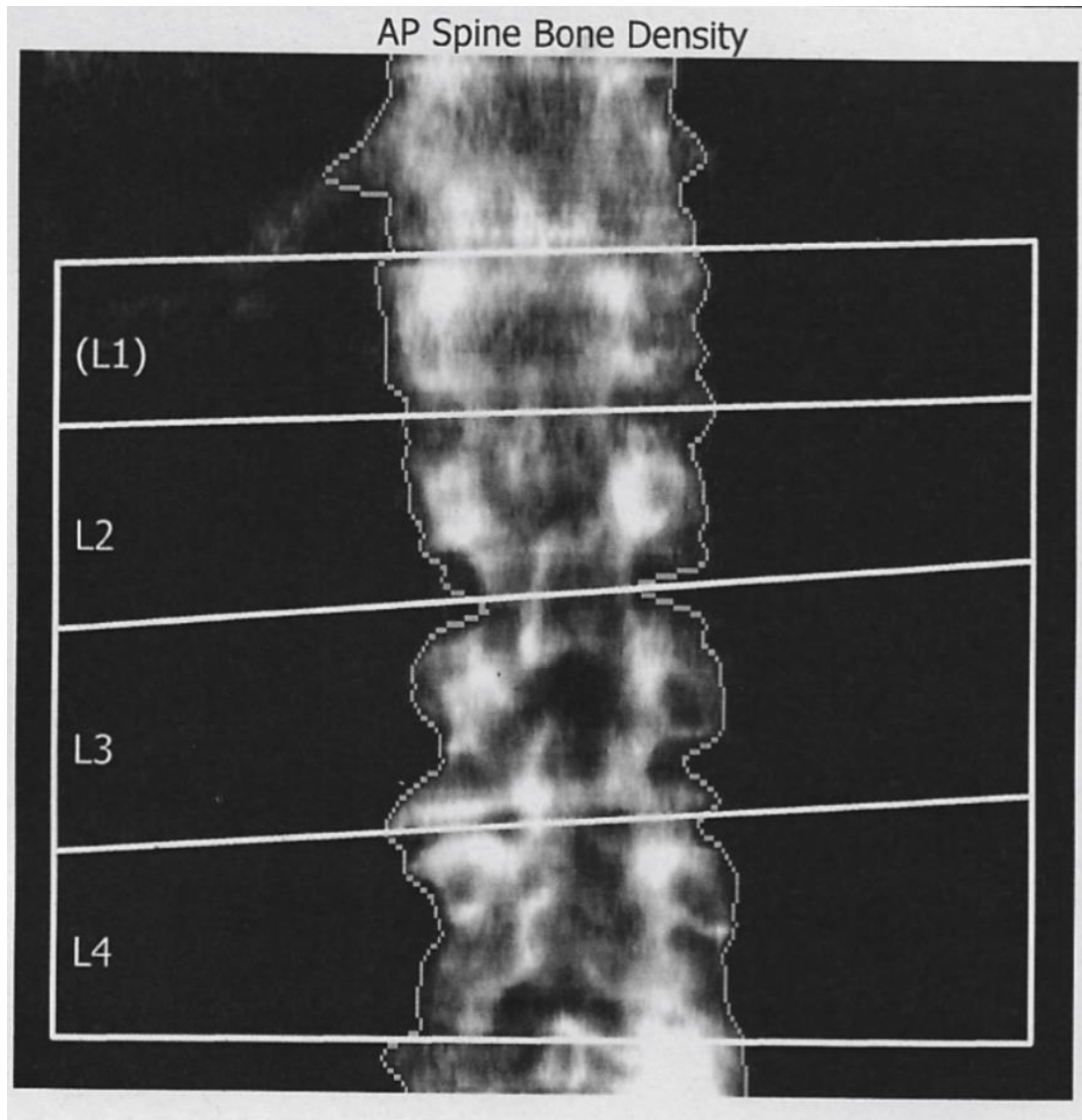


Region	BMD g/cm ²	T-score	Z-score
L1-4	1.026	-1.6	-1.5



Region	BMD g/cm ²	T-score	Z-score	% change
L1-4	0.959	-2.2	-2	-6.5 %

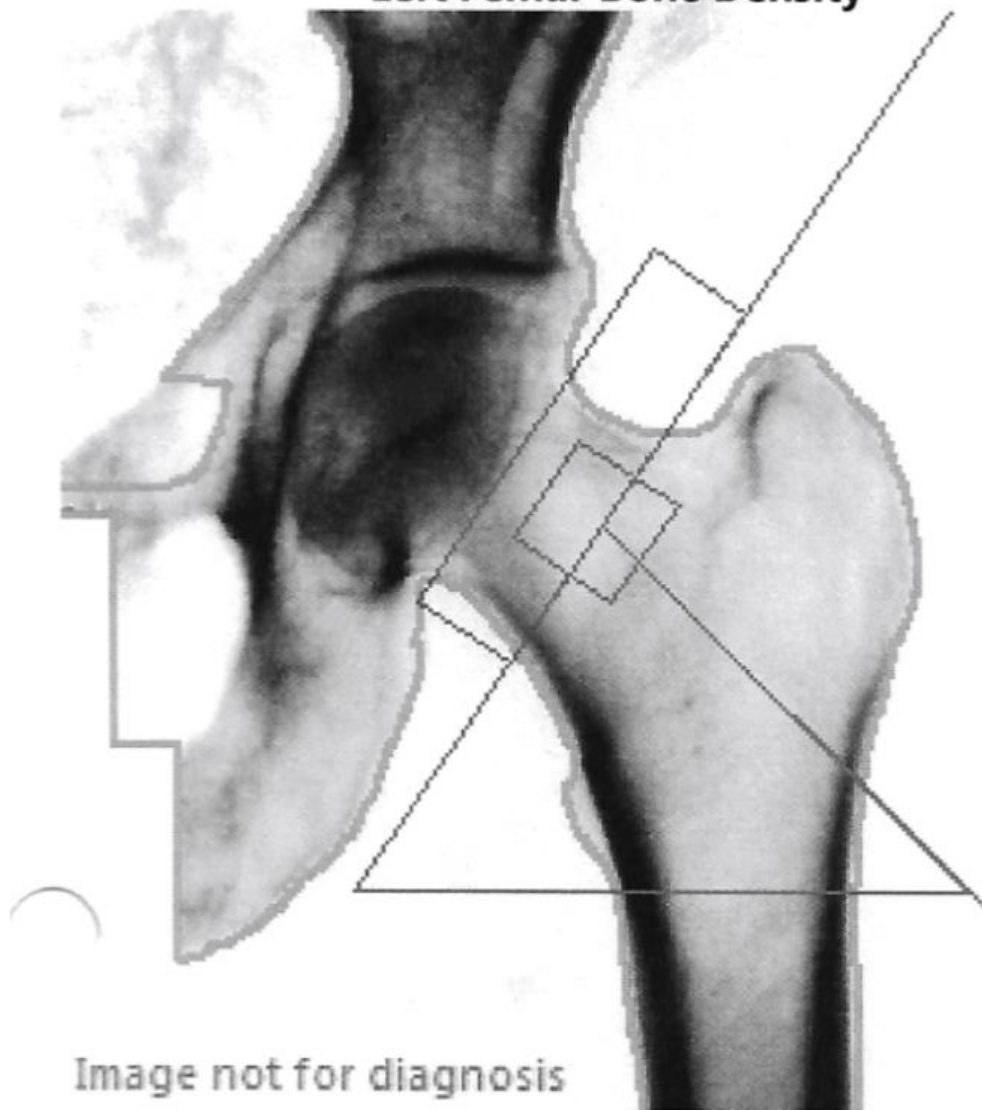
Follow up case 1



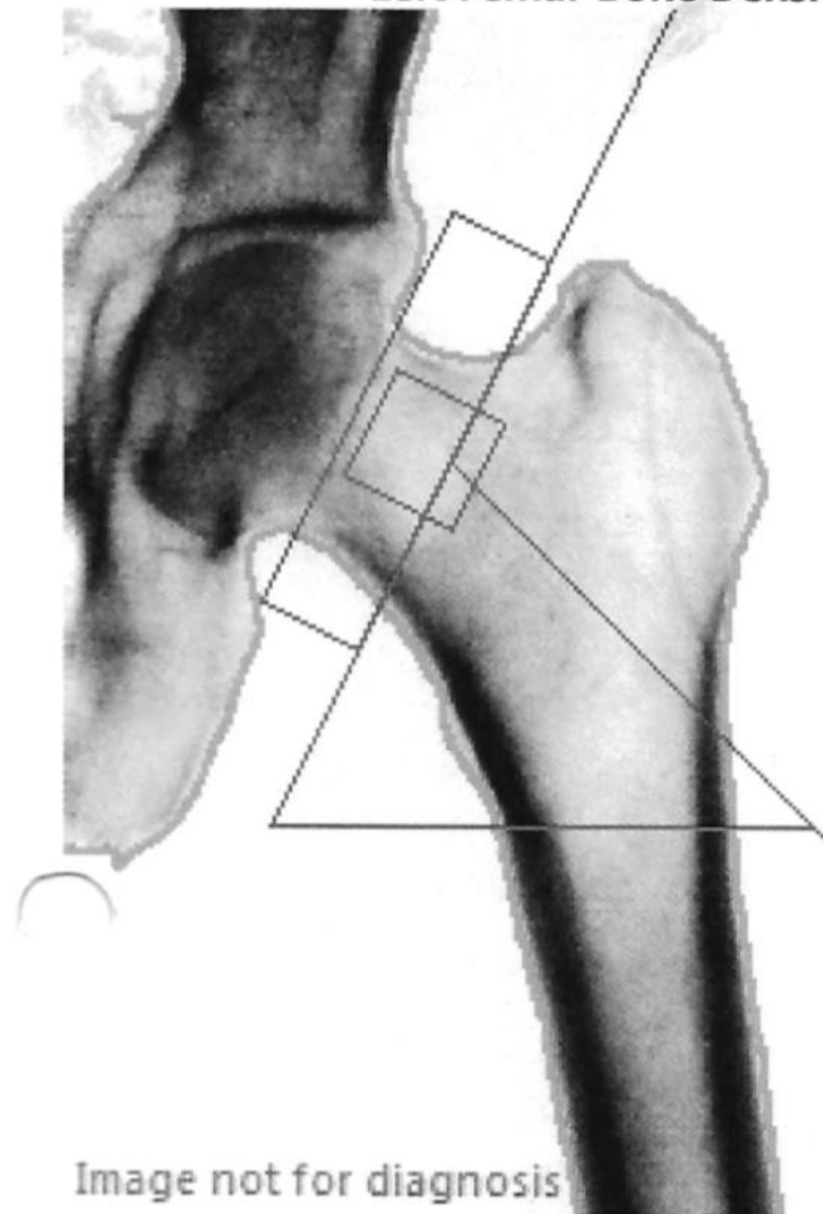
Region	BMD g/cm ²	T-score	Z-score	% change
L1-4	0.959	-2.2	-2	-6.5 %
L2-4	0.963	-2.3	-2.1	-9.2 %

Reliable or not
reliable???

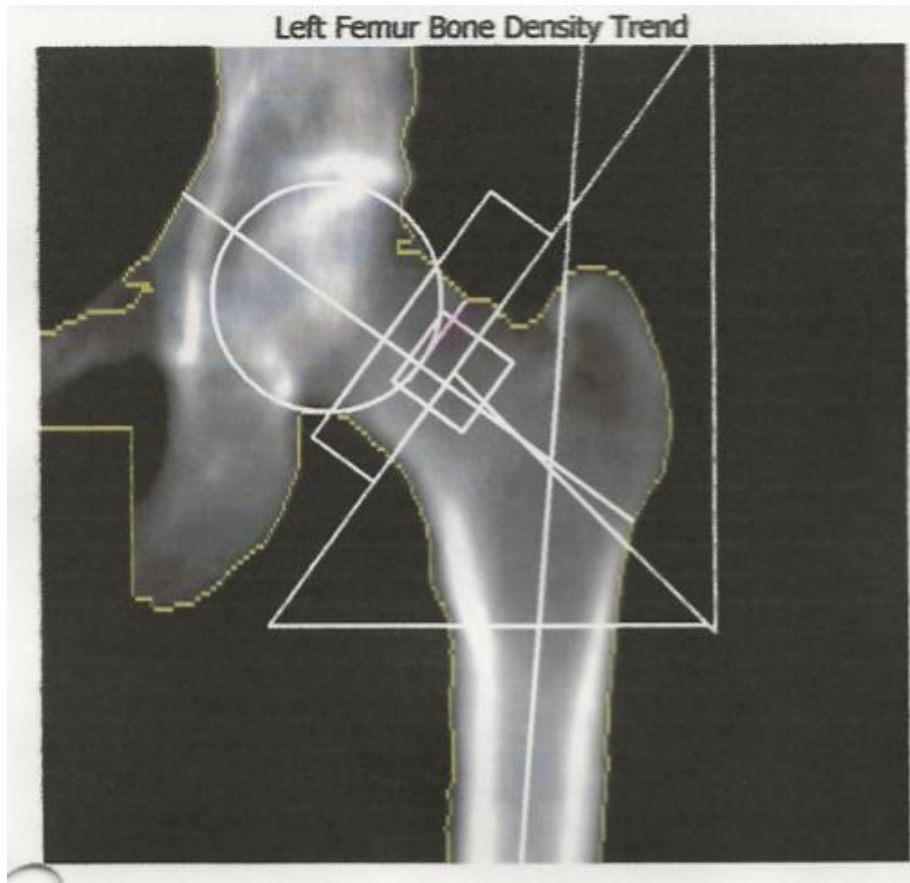
Left Femur Bone Density



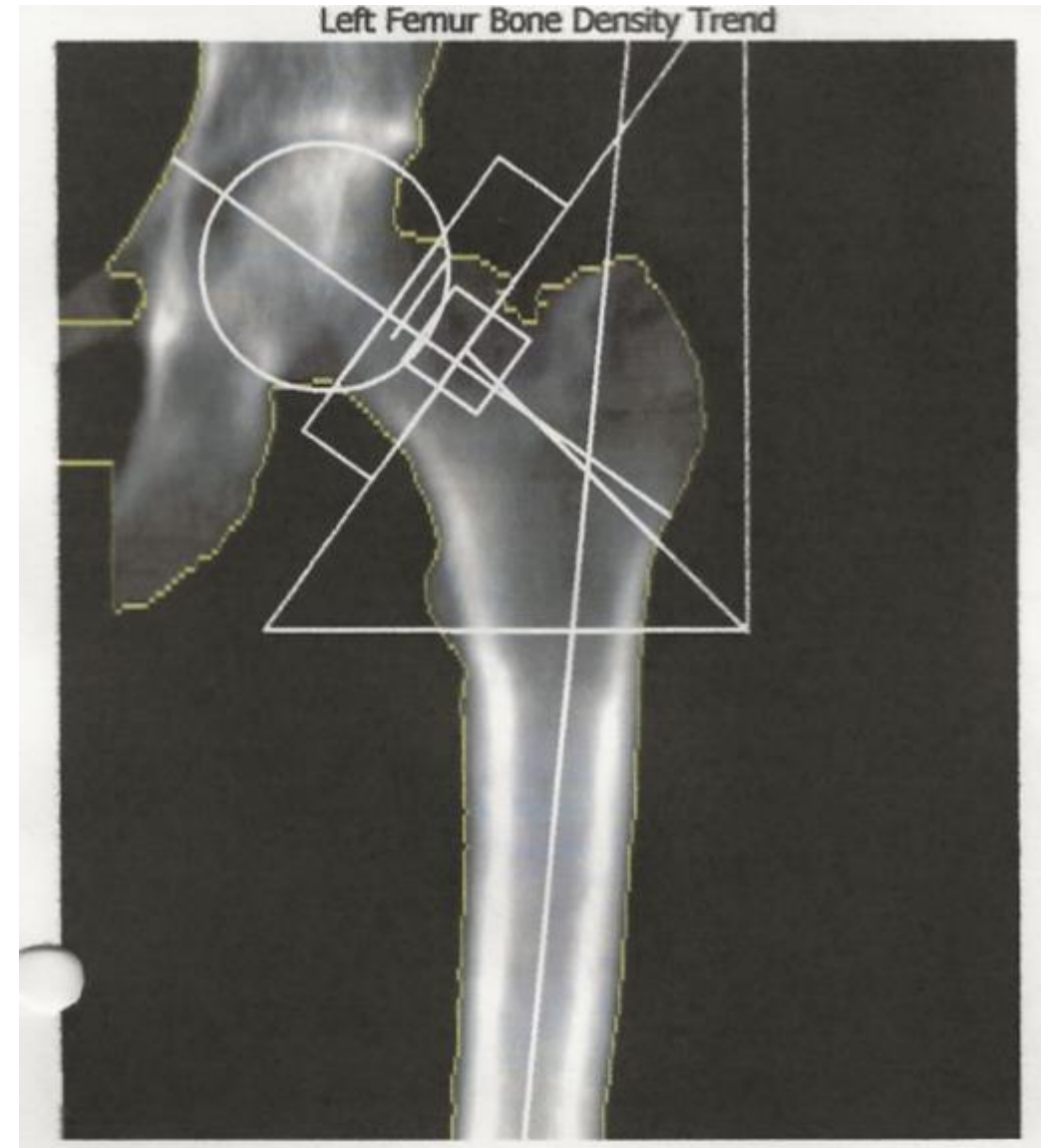
Left Femur Bone Density



- Rate of change 1.1% in 3 years

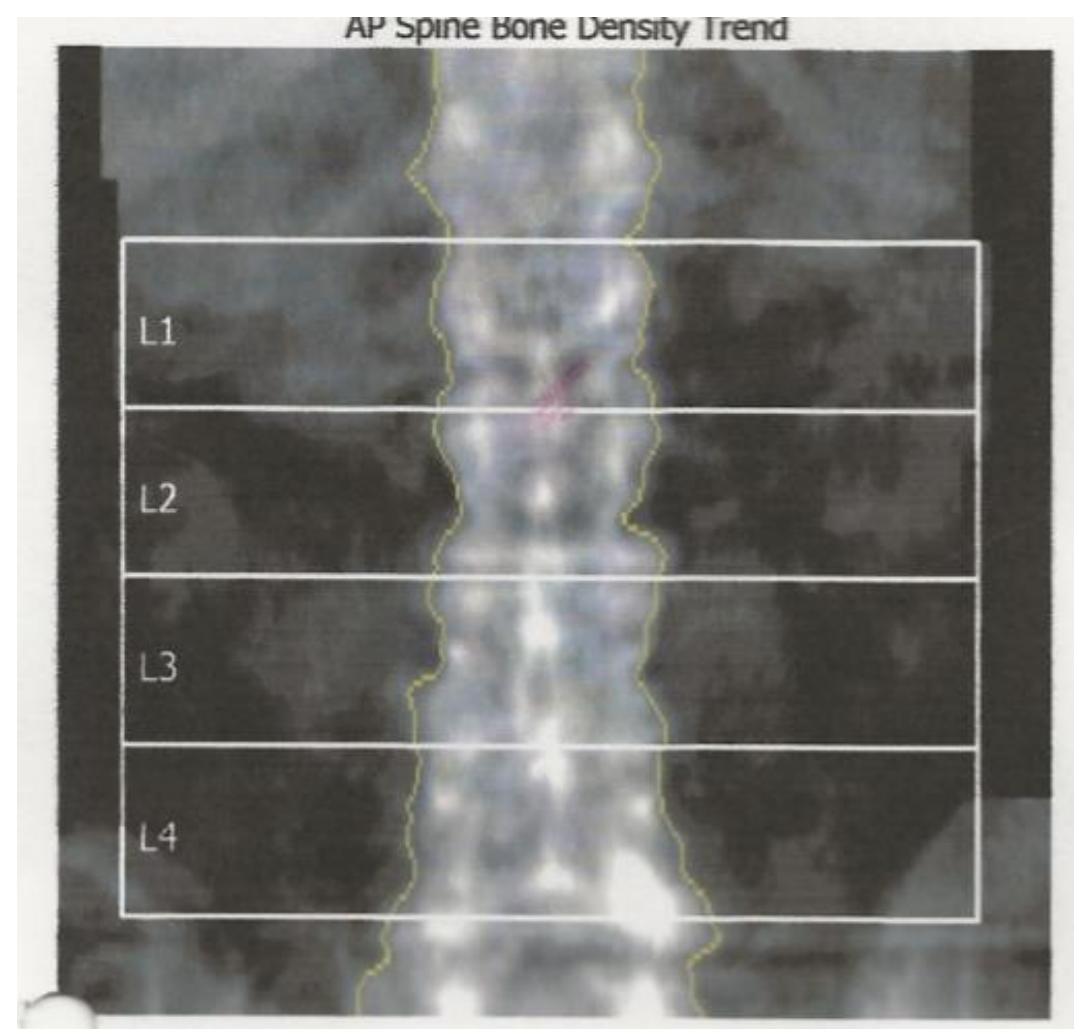
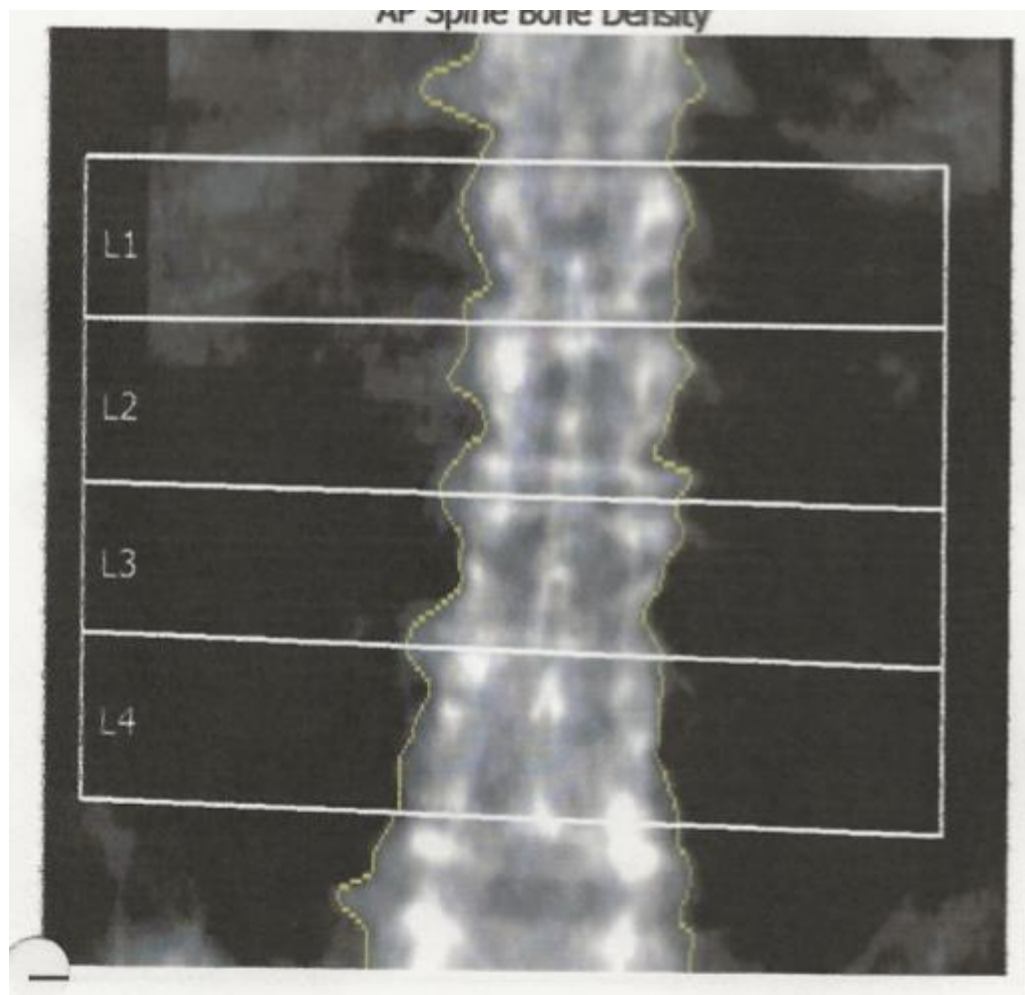


- Rate of change 13.9% in 2 years

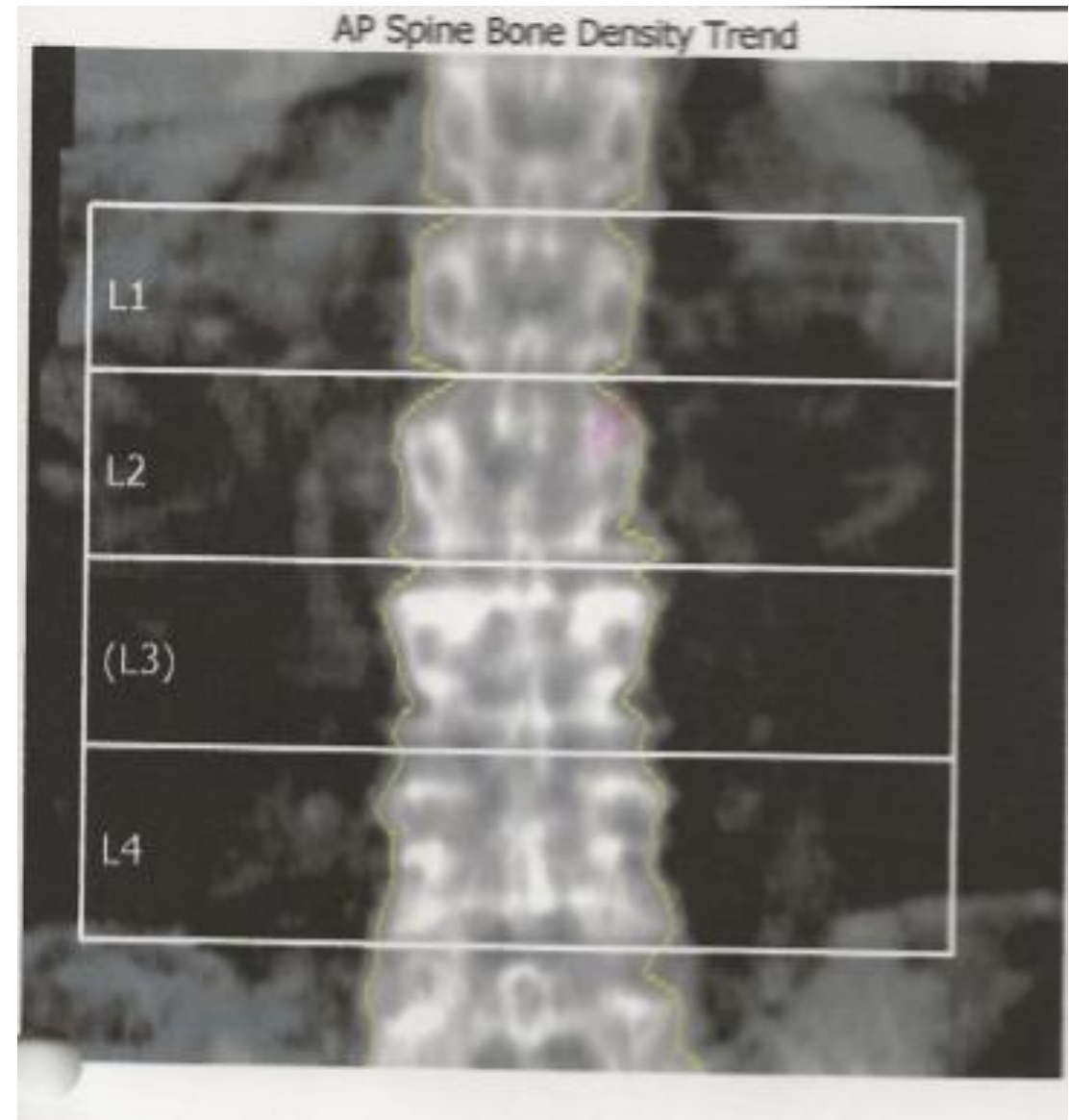


Measured:	19/02/2007	14:33:32	(10.50)
Analyzed:	19/02/2007	14:43:50	(10.50)

14/09/2018	12:37:53	(13.60)
14/09/2018	12:39:30	(13.60)



- Rate of change 12.5% in 11 years



- Rate of change 2% in 2 years

Questions & discussion

